



Agate Road, W6

£2,500,000

This impressive and imposing six bedroom house situated on a prime spot on Agate Road in Brackbury Village measuring in at almost 3000sq feet and benefiting from unobstructed views.

Agate Road is located in the heart of Brackbury Village with its popular independent shops, bars and restaurants as well as the green spaces of Ravenscourt Park and an abundance of transport links.

Features

- Six Bedrooms
- Three Bathrooms
- Downstairs WC & Utility Room
- Open Plan Kitchen Diner
- Circa 3000sq feet
- Brackbury Village



Agate Road, W6

The ground floor offers an abundance of living space in the form of two sprawling reception rooms and a large open plan kitchen diner which leads out onto the sunny rear garden, this floor further benefits from a separate utility room and WC as well as access to the headheight basement.

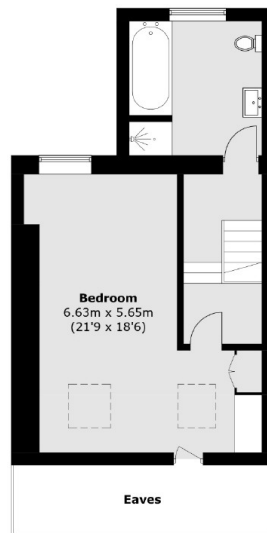
The first floor houses the master bedroom which spans the full width benefits from built in storage and a large bay window allowing for bundles of natural light, there is a further double bedroom and modern three piece bathroom on this floor also.

The second floor has a further sprawling, full width bedroom another double bedroom and a smaller bedroom which can double up as a study/office as well as a shower room.

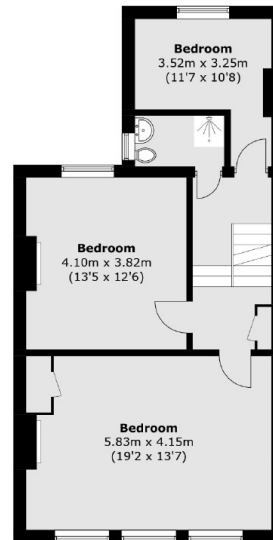
The top floor has a large modern four piece bathroom with underfloor heating and the final large double bedroom.



Agate Road, London, W6



Third Floor



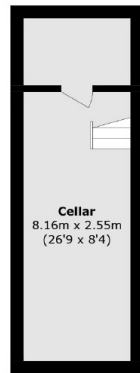
Second Floor



Basement

Ground Floor

First Floor



Total area (approx.): 276.0 sq. m (2,970.8 sq. ft)
(Excluding Eaves)