



Great West Road, W6

£1,050,000

A unique and spacious apartment offering three double bedrooms, two bathrooms, a spacious reception, an eat in kitchen/diner and a large private terrace with views overlooking the river.

Located close to the River Thames and Underground Stations including Hammersmith Tube Station.

Features

- Duplex Apartment
- Three Double Bedrooms
- Two Bathrooms
- River Views
- Gated Development
- Allocated Parking



Great West Road, W6

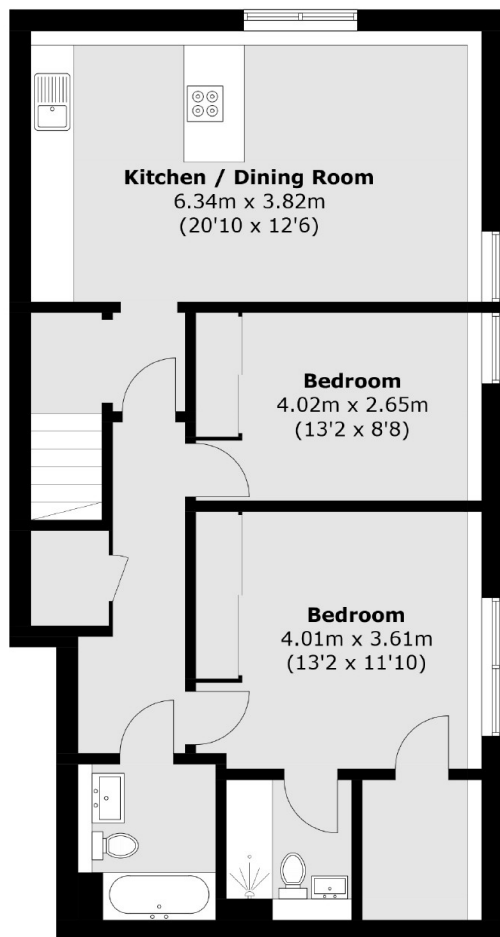
A unique and spacious two/three bedroom penthouse perfectly located only moments from the River boasting stunning views. This penthouse offers three large double bedrooms, two bathrooms (one en-suite) all of which have been finished to a very high standard.

On the top floor you will find a bright and spacious reception leading onto a large private terrace with views overlooking the river. The modern eat in kitchen/diner provides ample space for dining and also leads out on to a further private terrace.

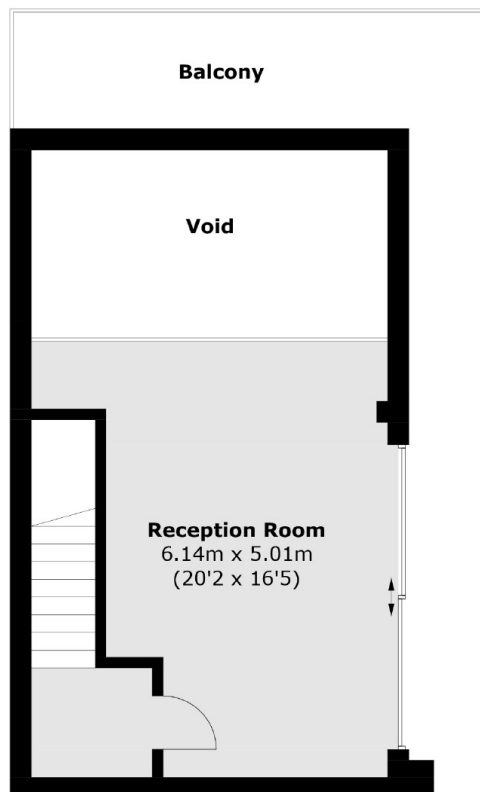
Further benefits include private allocated parking, underfloor heating throughout and is located in a secure private development.



Great West Road, London, W6



Fourth Floor



Fifth Floor

Total area (approx.): 108.1 sq. m (1,163.6 sq. ft)
(Excluding Void)
Balcony (approx.): 21.1 sq. m (227.1 sq. ft)