



Dorville Crescent, W6

£450,000

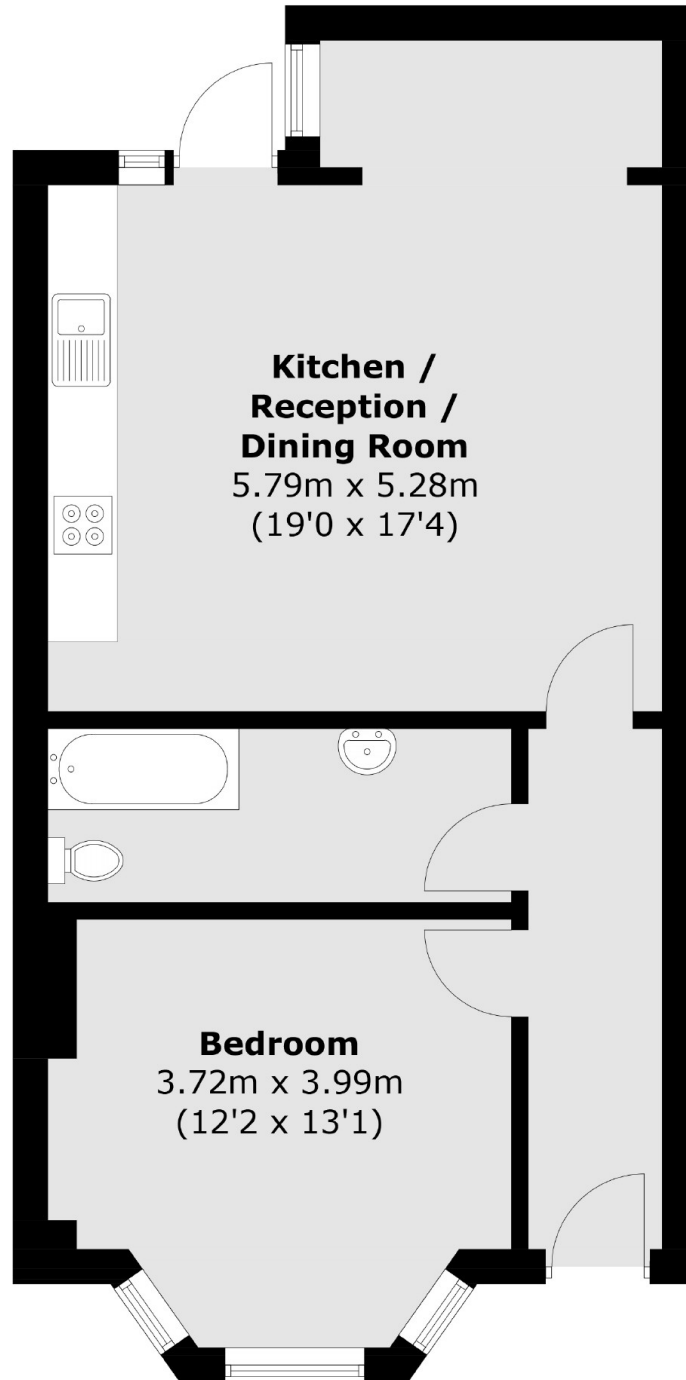
This large one bedroom garden flat is located in the heart of Brackenbury Village. This property has been recently refurbished to a high standard and would make a wonderful home or investment.

Dorville Crescent is a highly sought road close to Ravenscourt Park and is within the catchments of outstanding primary schools. Hammersmith and Ravenscourt Park station are close by.

Features

- One Bedroom
- One Bathroom
- Large Garden
- Recently Refurbished
- Brackenbury Village
- Ravenscourt Park

Dorville Crescent, London, W6



Total area (approx.): 54.6 sq. m (587.7 sq. ft)