



Hamlet Gardens, W6

£650,000

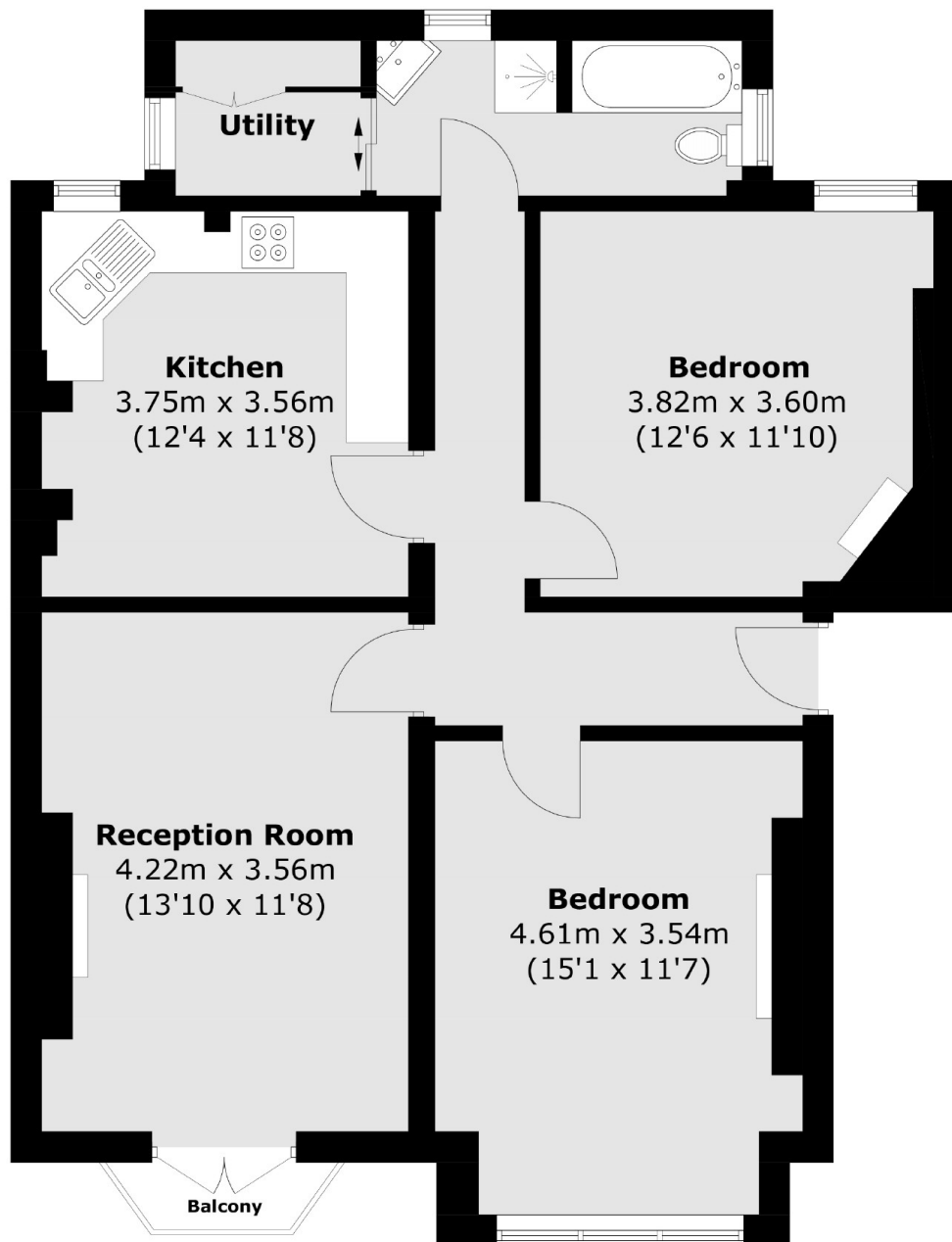
This wonderful two bedroom apartment located in this sought after building, the property benefits from two great size bedrooms, a separate kitchen dining space and a sprawling reception room with a squared off bay window and Juliet balcony.

Hamlet Gardens is sought after development close to Ravenscourt Park and a short distance to all amenities of Stamford Brook, Chiswick High Road and the riverside.

Features

- Two Bedrooms
- Share Of Freehold
- Separate Kitchen
- Large Reception Room
- Juliet Balcony
- Almost 900Sq Ft

Hamlet Gardens, London, W6



Total area (approx.): 82.6 sq. m (889.1 sq. ft)
Balcony : 1.2 sq. m (13 sq. ft)