



Rutland Grove, W6

£1,154 Per week

A modern townhouse close to the river in Hammersmith which offers an abundance of natural light and generous space across all floors.

The property is located on Rutland Grove in Hammersmith, close to the river and a short walk to the local amenities of King Street and Hammersmith tube station.

Features

- Three Bedrooms
- Two Bathrooms
- Wood Floors
- Utility Room
- Private Outside Space
- Modern Townhouse

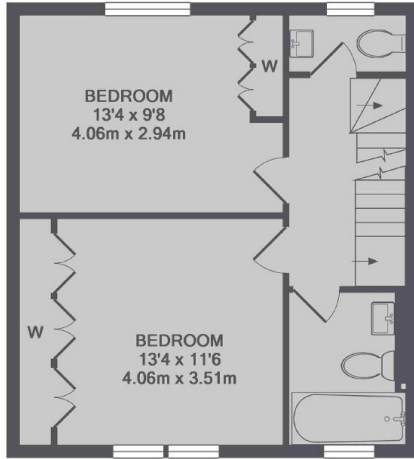


Rutland Grove, W6

There is a large kitchen/diner, utility room, double reception room, three double bedrooms and two bathrooms as well as two terraces. Totalling just over 1600 sq ft and also includes off street parking.



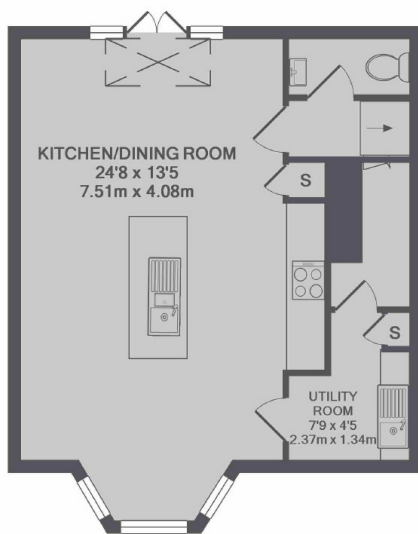
Rutland Grove, London, W6



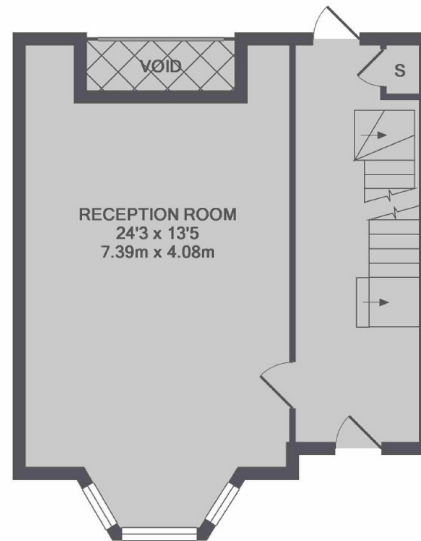
1ST FLOOR



2ND FLOOR



LOWER GROUND FLOOR



GROUND FLOOR

TOTAL APPROX. FLOOR AREA 1607 SQ.FT. (149.3 SQ.M.)