



Great West Road, W6

£899,999

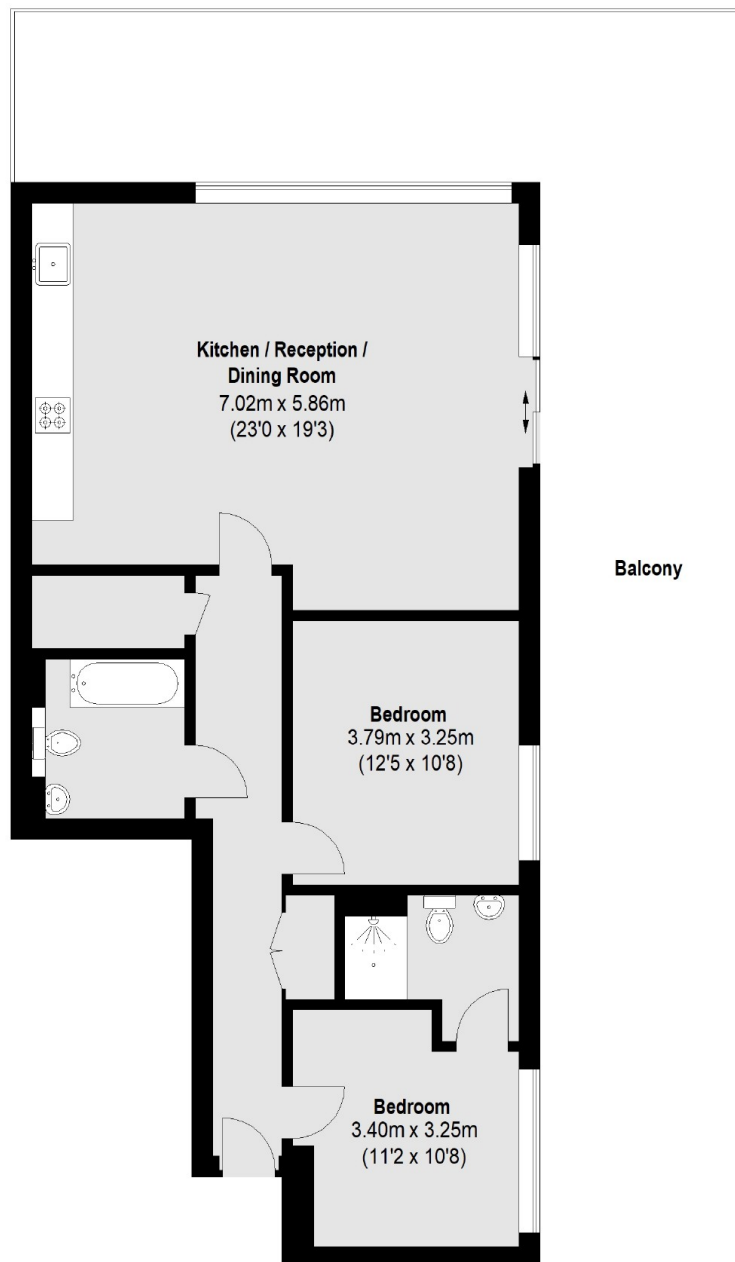
This is a wonderful two double bedroom apartment in a converted Victorian Pumping Station. The property has a bright and spacious living area, two large double bedrooms, one with an en-suite and a stylish fitted open plan kitchen and access to a large private terrace.

Located a short walk from Ravenscourt park with amenities of both King Street and Chiswick High Road. The walk along the Thames is picturesque with some riverside pubs and restaurants.

Features

- Two Bedrooms
- Large Balconies
- Parking Space
- Lift
- River Thames
- Ravenscourt Park Station

Great West Road, London, W6



Ground Floor

Total area (approx.): 85.4 sq. m (919 Sq. ft)
Balcony : 71.60 sq. m (771 Sq. ft)