



Glenthorne Road, W6

£484 Per week

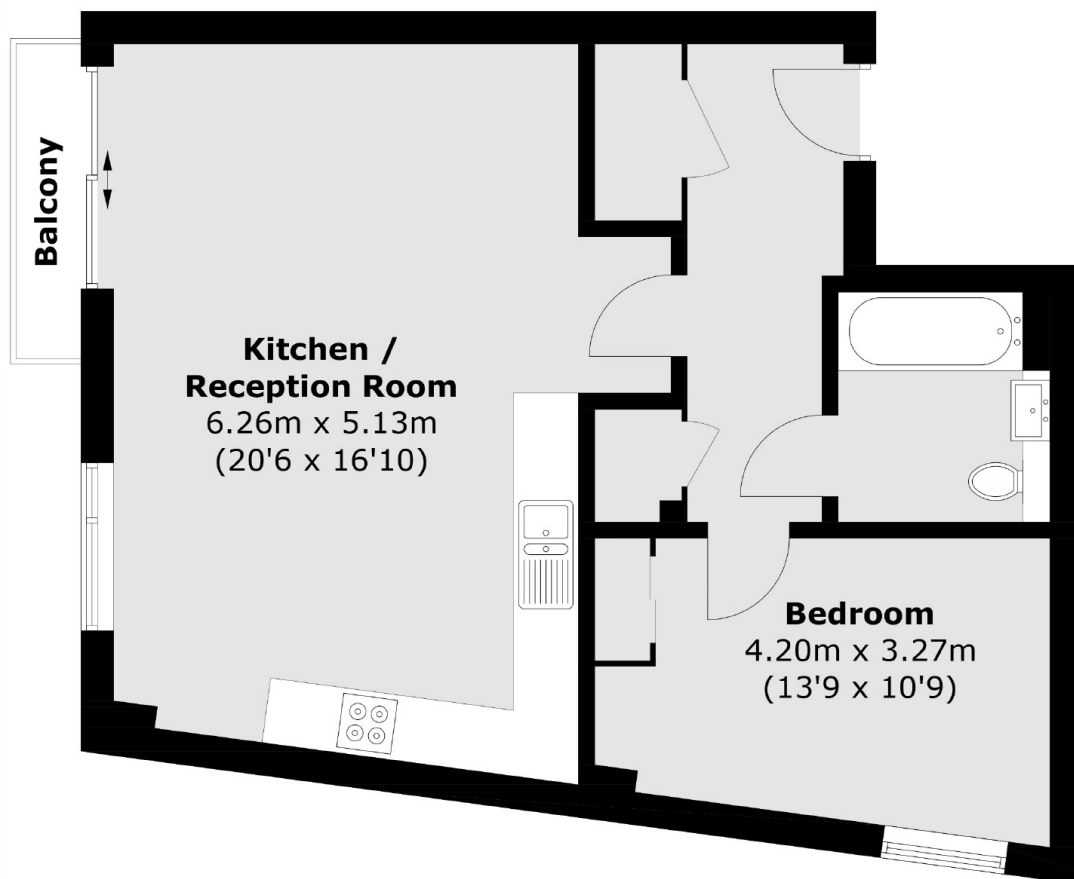
A well presented one bedroom apartment in a private development, moments from Hammersmith Broadway. There is an open plan kitchen/reception room with a private balcony, large bedroom with in built storage, modern bedroom and bathroom.

The apartment is located within the Gooch House development and is in close proximity to Hammersmith station (Piccadilly, District, Circle, and Hammersmith & City Line), as well as Ravenscourt Park Station. The A4/M4 is easily accessible.

Features

- One Bedroom
- Private Balcony
- Open Plan
- Lift Access
- Communal Roof Terrace
- Good Transport Links

Glenthorne Road, London, W6



Total area (approx.): 55.0 sq. m (592.0 sq. ft)
(Excluding Balcony)