



## King Street, W6

£646 Per week

A beautifully presented, split-level second floor apartment closely located to Ravenscourt Park. The property has a large, open plan, kitchen/reception room, master bedroom with en-suite bathroom, second double bedroom and family bathroom.

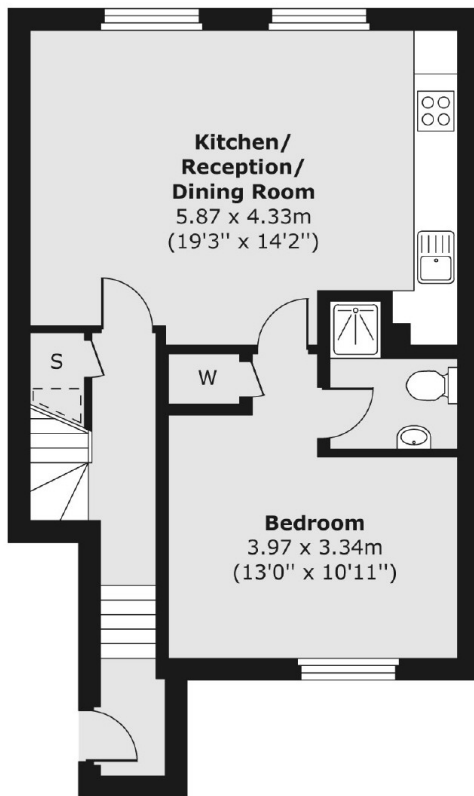
The property is located on King Street in Hammersmith, close to both Ravenscourt Park and Stamford Brook tube stations.

### Features

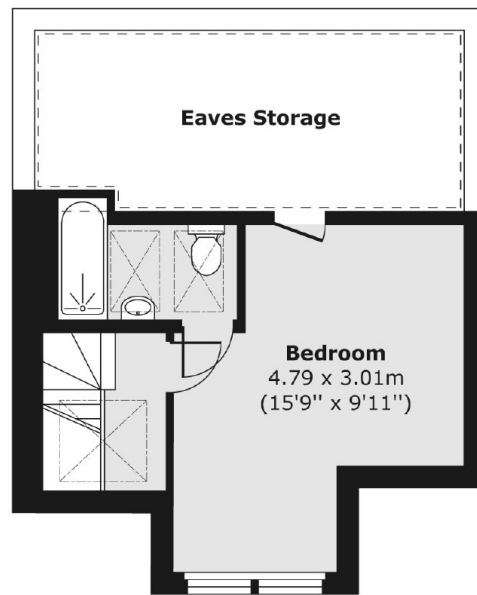
- Two Bedrooms
- Two Bathrooms
- Open Plan Kitchen/Living
- Split level
- Part Furnished
- Close To Tube

# King Street, London, W6

Second Floor



Third Floor



Total area (approx.) 73.32 sq. m (789 sq. ft)