



Great West Road, W6

£923 Per week

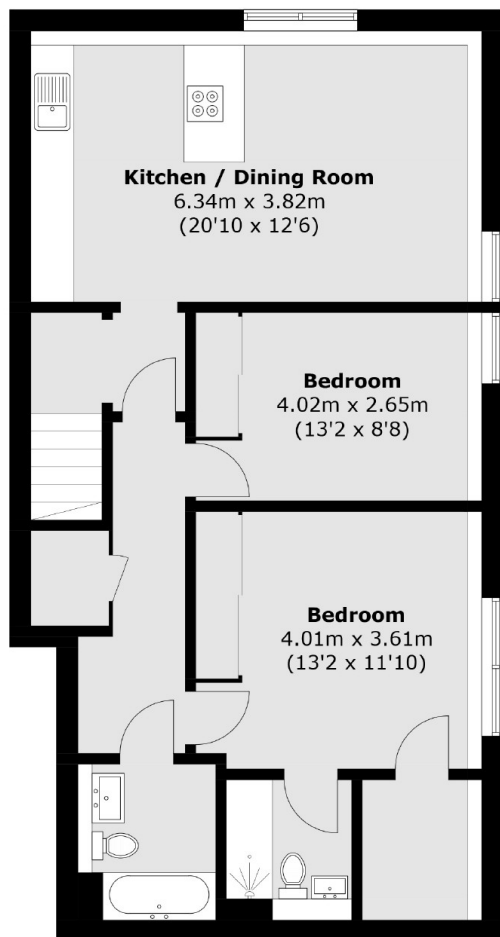
This duplex riverside penthouse apartment is on the fourth floor of a renovated historic Pump House and offers over 1,100 sq ft of fully refurbished space.

Ideally located for Ravenscourt Park tube station at just under half a mile away with Stamford Brook tube station less than three quarters of a mile away.

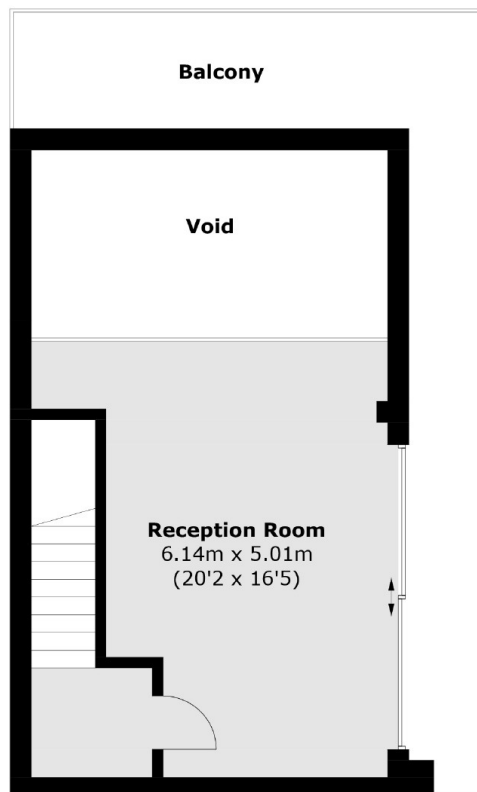
Features

- Split Level
- Integrated Kitchen
- Private Terrace
- Two Double Bedrooms
- Gated Parking
- River Views

Great West Road, London, W6



Fourth Floor



Fifth Floor

Total area (approx.): 108.1 sq. m (1,163.6 sq. ft)
(Excluding Void)
Balcony (approx.): 21.1 sq. m (227.1 sq. ft)