



Redmore Road, W6

£1,000,000

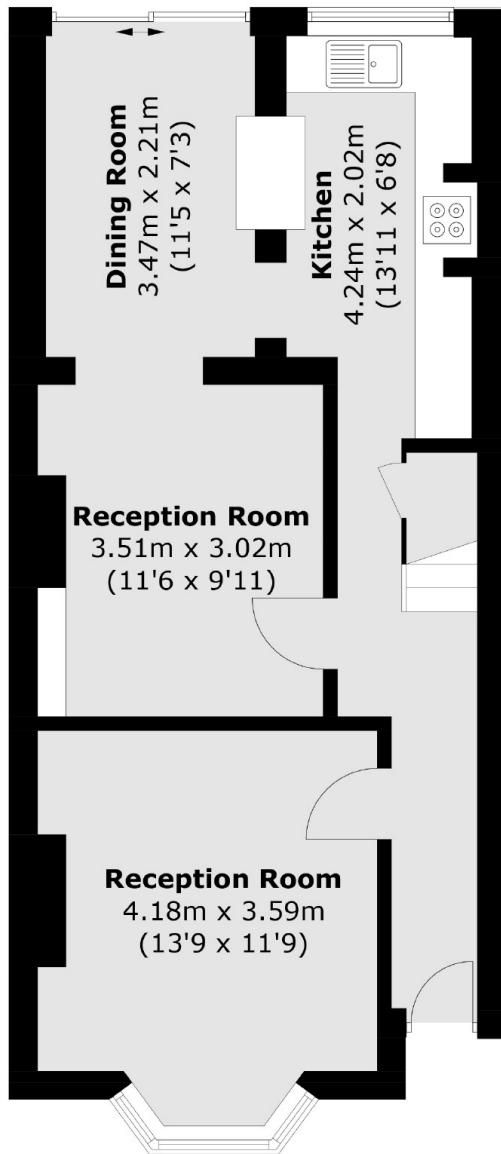
This well proportioned family house is perfectly positioned on the road with an uninterrupted south facing garden and allows any potential buyer to add their own stamp onto the property. The property is also offered chain free.

Redmore Road in the heart of Brackenbury Village offers family pubs, restaurants and shops all close by. It's a short walk to West London Free School, John Betts and Brackenbury Schools, as well as Hammersmith Broadway and Ravenscourt Park stations.

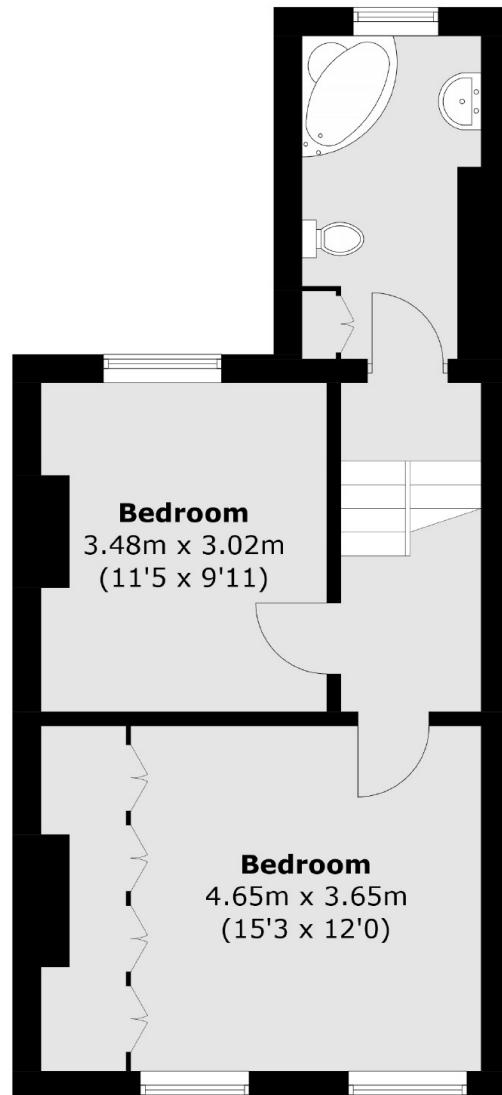
Features

- Two Bedrooms
- Uninterrupted South Facing Garden
- Potential To Modernise
- Brackenbury Village
- Close To Transport
- Chain Free

Redmore Road, London, W6



Ground Floor



First Floor

Total area (approx.): 91.7 sq. m (987.1 sq. ft)