

## Margravine Road, W6

£995,000

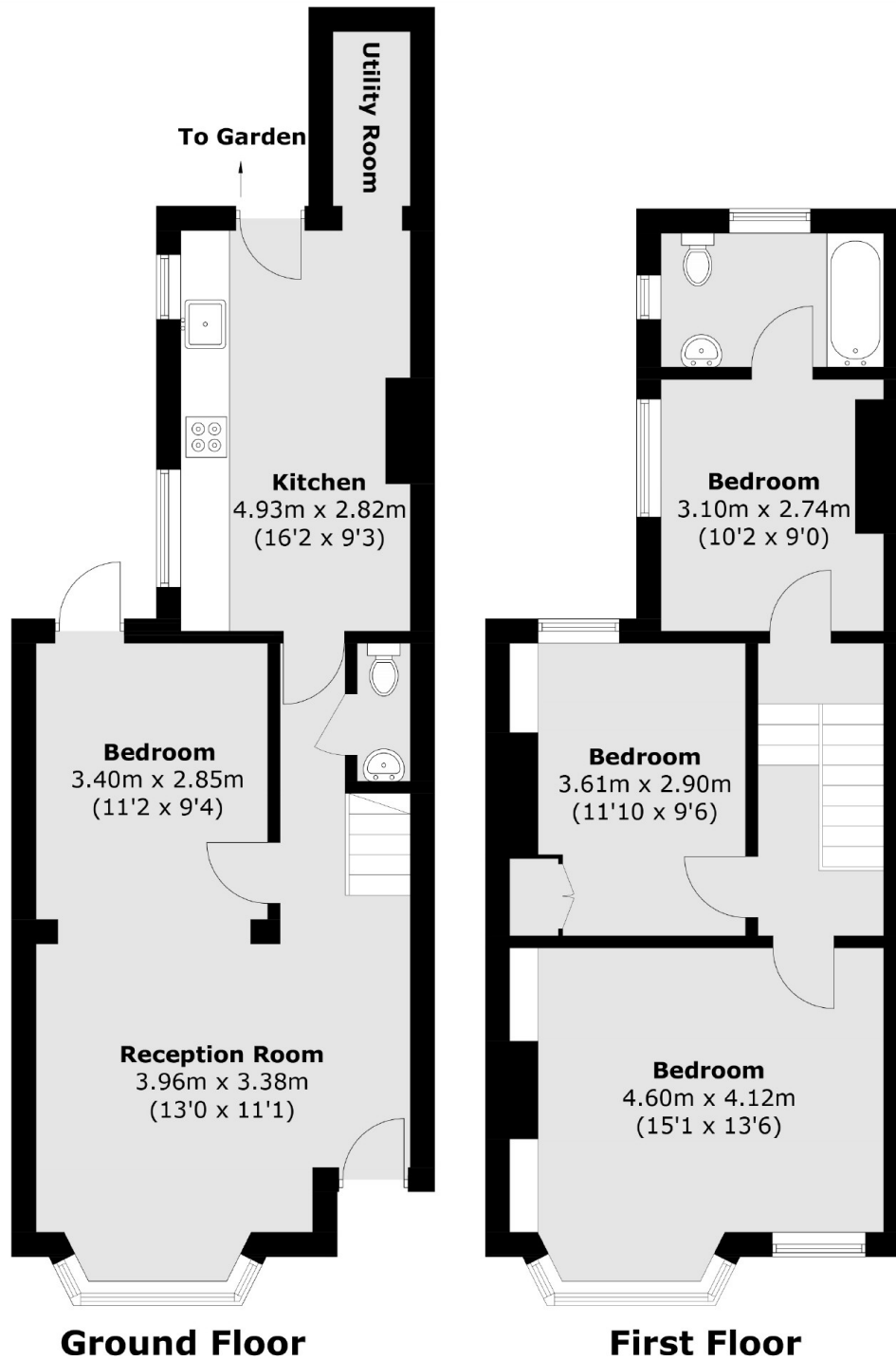
This is a wonderful three bedroom house close to the River Thames is presented in good condition and would make a fantastic family home.

Located near Barons Court and Hammersmith stations, Margravine Road benefits from a range of great transport links including tube and bus routes. There are a variety of boutique shops, bars and eateries and is walking distance to the river Thames.

### Features

- Three Bedrooms
- Freehold House
- Garden
- River Thames
- Barons Court
- Chain Free

# Margravine Road, London, W6



Total area (approx.): 98.9 sq. m (1064.0 sq. ft)