

Hamlet Gardens, W6

£770,000

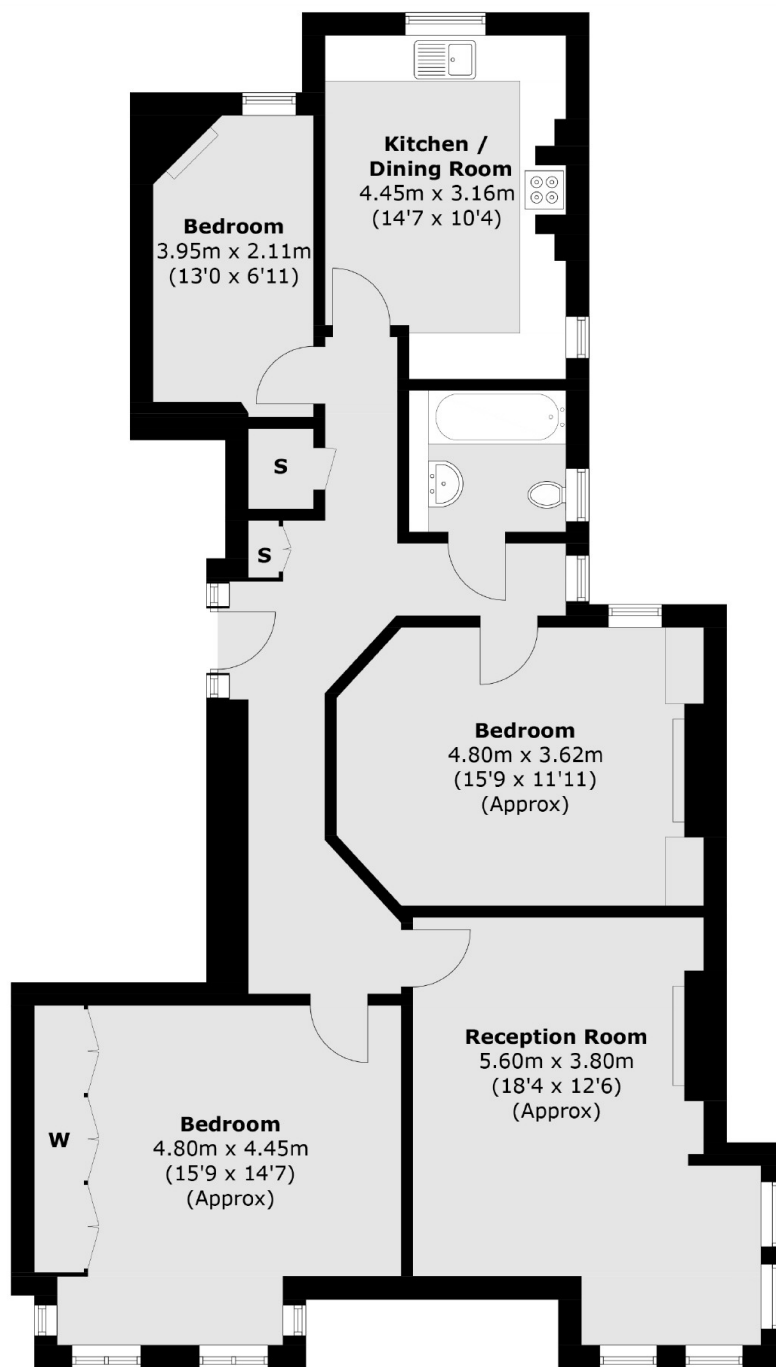
This wonderful three bedroom apartment located in this sought after building, the property benefits from three great size bedrooms, a separate kitchen dining space and a sprawling reception room with a squared off bay window.

Hamlet Gardens is sought after development close to Ravenscourt Park and a short distance to all amenities of Stamford Brook, Chiswick High Road and the riverside.

Features

- Three Bedrooms
- Over 1100Sq Feet
- Share Of Freehold
- Separate Kitchen
- Large Reception Room
- Raised Ground Floor

Hamlet Gardens, London, W6



Raised Ground Floor

Total area (approx.): 102.7 sq. m (1,105.5 sq. ft)