



Madrid Road, SW13

£1,500 Per week

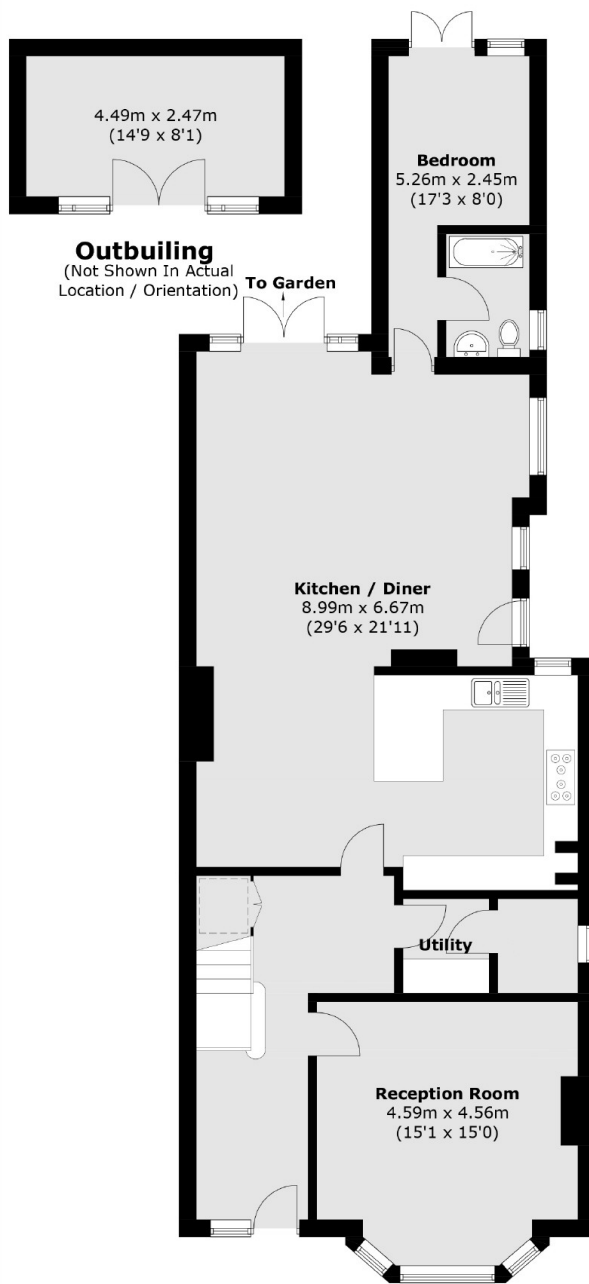
A newly renovated semi-detached house finished to a modern standard, with eight bedrooms split over three floors situated centrally in Barnes. The property comprises of two reception rooms with an open-plan fully integrated kitchen, as well as a separate utility room and outhouse in the large garden.

Located close to Castelnau, the house is only a short walk to Barnes Village, Barnes Station and Hammersmith Bridge.

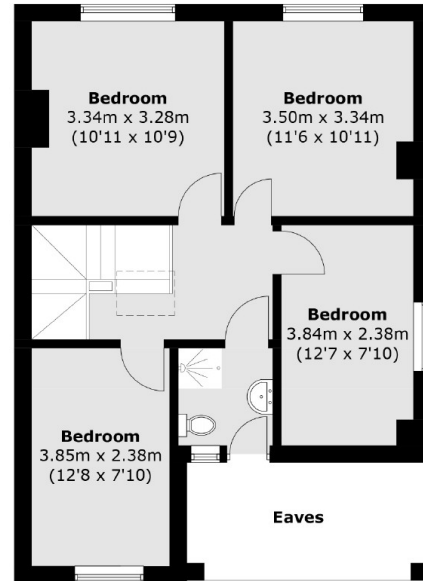
Features

- Eight Bedrooms
- Three Bathrooms
- Open Plan Kitchen
- Utility Room
- Separate Outhouse
- Barnes Village

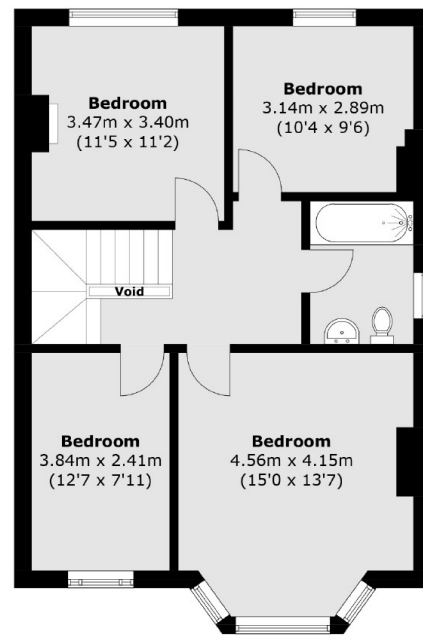
Madrid Road, London, SW13



Ground Floor



Second Floor



First Floor

Total area (approx.): 229.7 sq. m (2472.4 sq. ft)
(Excluding Eaves)
Outbuilding: 11.3 sq. m (121.6 sq. ft)