



## Hammersmith Grove, W6

£575,000

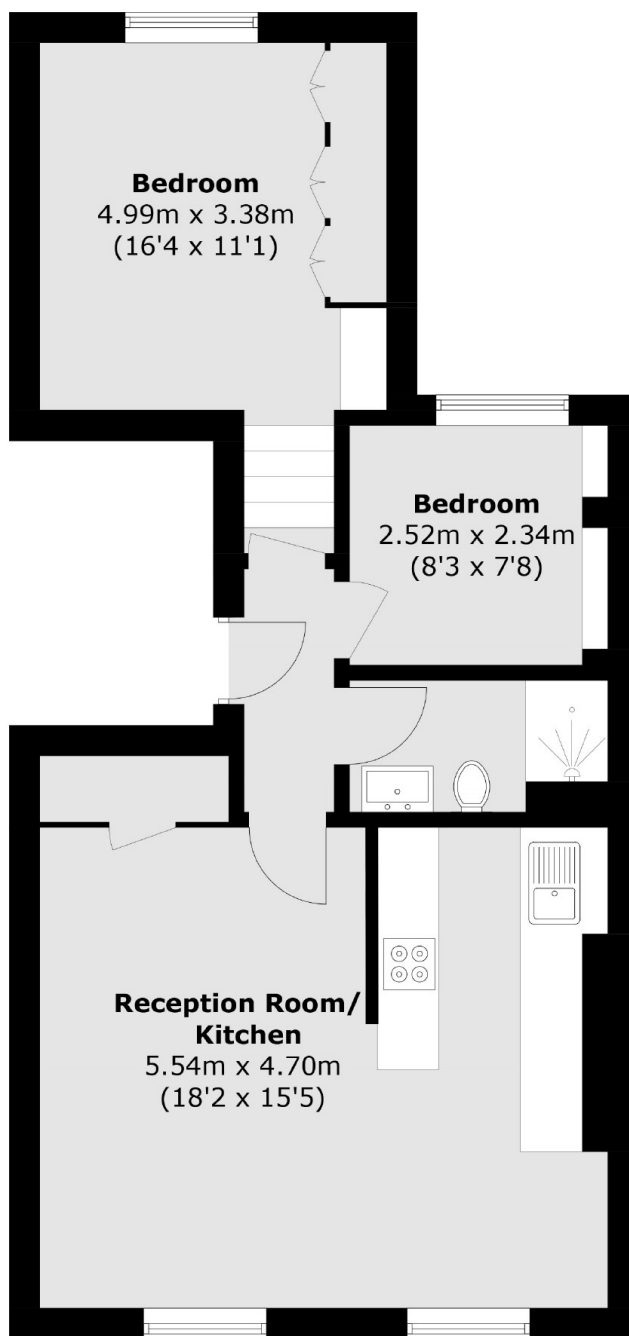
This well presented property is spaciouly laid out with a generous reception room and separate kitchen while being perfectly located for the amenities and transport links on offer.

Hammersmith Grove is centrally located for all the amenities of Brackenbury Village with its popular independent, shops, bars and restaurants as well as the green spaces of Ravenscourt Park and abundance of transport links.

### Features

Well Presented  
Spacious Layout  
Separate Kitchen  
Brackenbury Village  
Close To Amenities  
Close To Station

# Hammersmith Grove, London, W6



## First Floor

Total area (approx.): 53.8 sq. m (579.0 sq. ft)