



## Hammersmith Grove, W6

£699,999

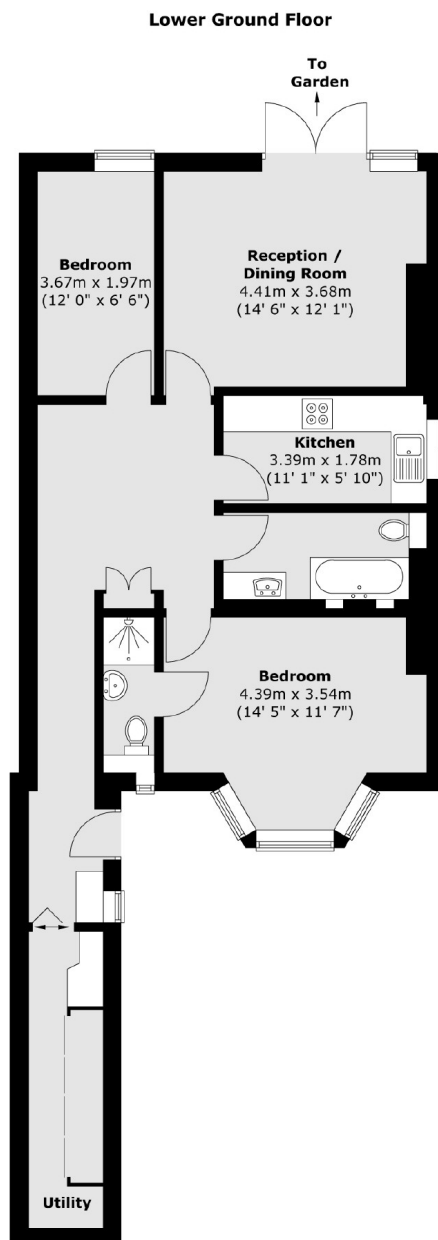
This well presented lower ground floor flat is located on a prime sought after road, the flat benefits from a separate utility space, two bathrooms and a private garden as well as its own front door. The property further benefits from being a share of freehold.

Hammersmith Grove is a popular West London address, with Chiswick to the West. Westfield London shopping complex is close by as well as the green spaces of Brook Green and Ravenscourt Park.

### Features

- Two Bedrooms
- Off Street Parking
- Own Front Door
- Private Garden
- Share Of Freehold
- Chain Free

# Hammersmith Grove, London, W6



Total area (approx.) : 77 sq. m (829 sq. ft)  
Total patio area (approx.) : 9.1 sq. m (98 sq. ft)