



## St. James Street, W6

£850,000

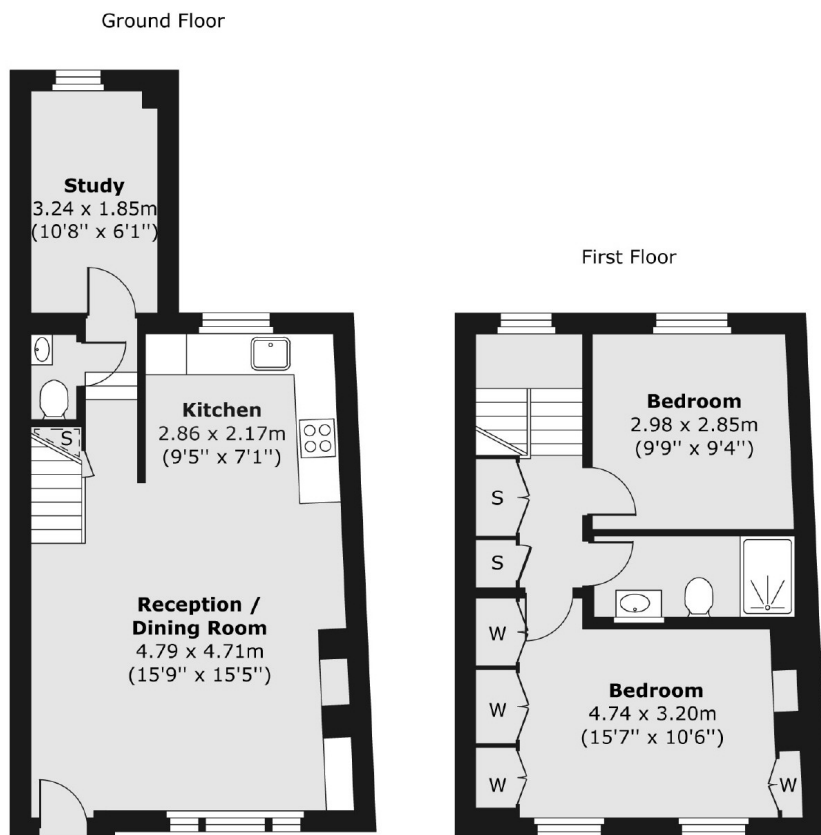
Situated close to the River Thames, this is an impressive newly refurbished three bedroom maisonette which would make a wonderful home. It is located on a quiet road and has open plan living, a private entrance and demised loft space.

St James Street is a popular road close to the River Thames tow path and a short walk from Hammersmith Broadway. Shops and restaurants are on the door step as are numerous tube and bus links into the city.

### Features

- Three Bedrooms
- Private Entrance
- Beautiful Street
- High Ceilings
- River Towpath
- Hammersmith Broadway

# St. James Street, London, W6



Total area (approx.) 71.02 sq. m (764 sq. ft)