



## Brackenbury Road, W6

£950,000

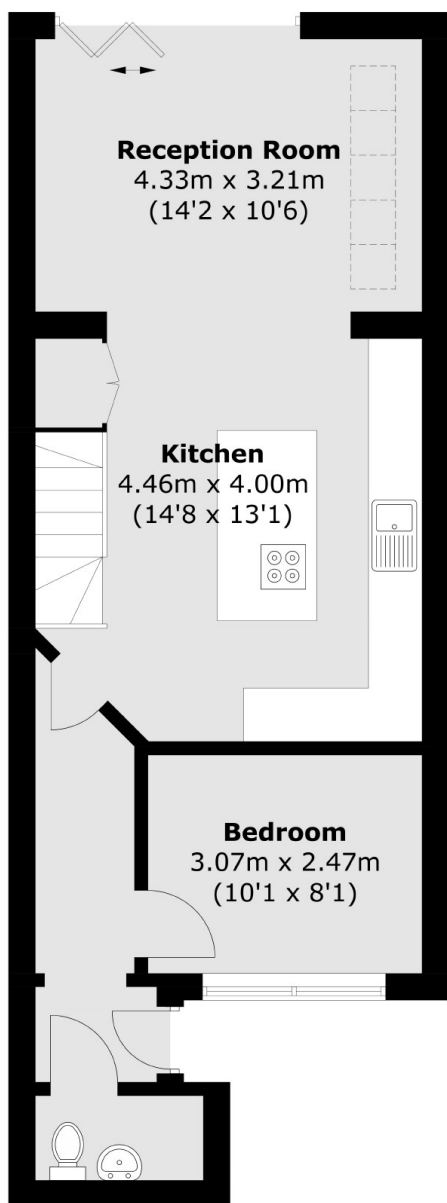
This split level, fully renovated maisonette is located in the heart of Brackenbury Village and benefits from a spacious layout, private outside space, its own front door as well as brand new kitchen with integrated appliances.

Brackenbury Road is centrally located for all the amenities of Brackenbury Village with its popular independent, shops, bars and restaurants as well as the green spaces of Ravenscourt Park and abundance of transport links.

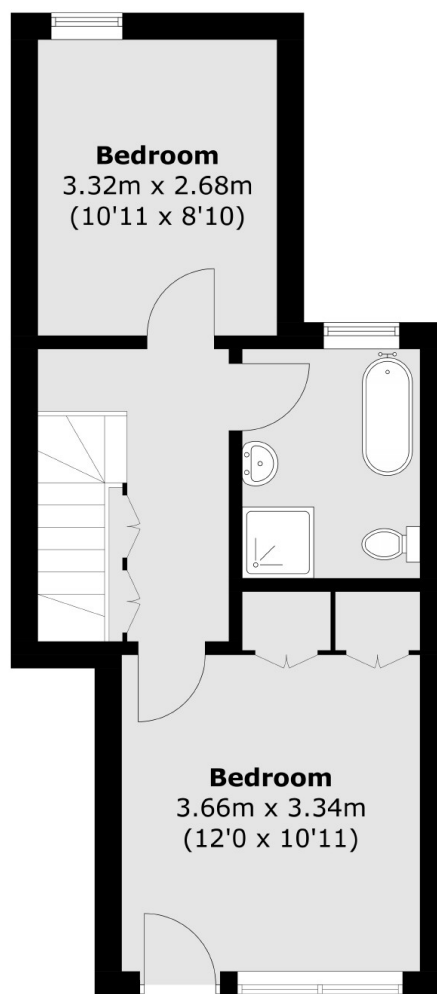
### Features

- Two/Three Bedrooms
- Private Garden
- Own Front Door
- Split Level
- Fully Renovated
- Chain Free

# Brackenbury Road, London, W6



**Lower Ground Floor**



**Ground Floor**

Total area (approx.): 85.3 sq. m (918.1 sq. ft)