



Theresa Road, W6

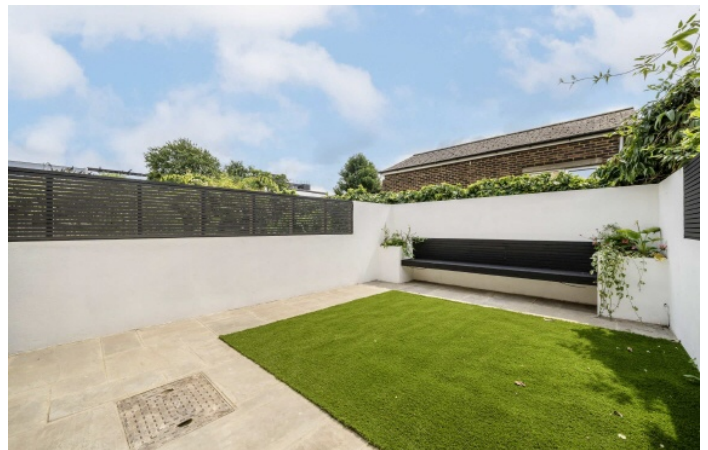
£1,275,000

This stunning and meticulously renovated Victorian house is located in the ever popular St. Peters Square Conversation Area, having undergone a full renovation programme to bring it up to modern standards the property is now offered chain free.

Theresa Road is located in the highly popular St Peters Square Conservation Area. St Peters Square public park is just a short walk away with Ravenscourt Park Station and Stamford Brook Park Station moments away also.

Features

- Fully Renovated & Remodelled
- Double Storey Rear Extension
- Over 1144 Sq Feet
- Sunny Landscaped Garden
- Four Piece Bathroom
- Chain Free



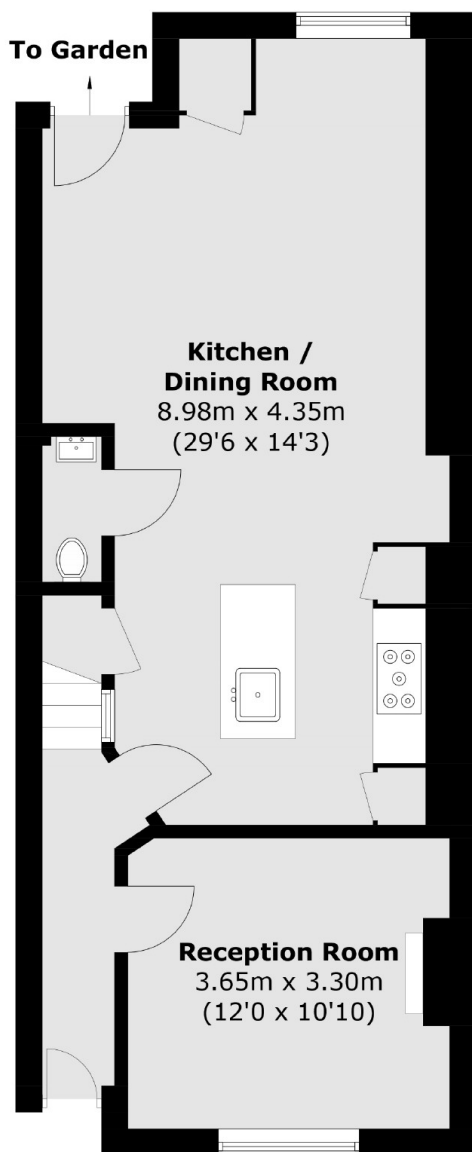
Theresa Road, W6

At over 1140sq feet, this house has undergone a full renovation and extension programmed to maximise space on both storeys, with the key feature being a double storey extension to the rear with a Juliette balcony, the second reception has been opened up into the rear extension to create a large flowing kitchen dining space opening up in the garden.

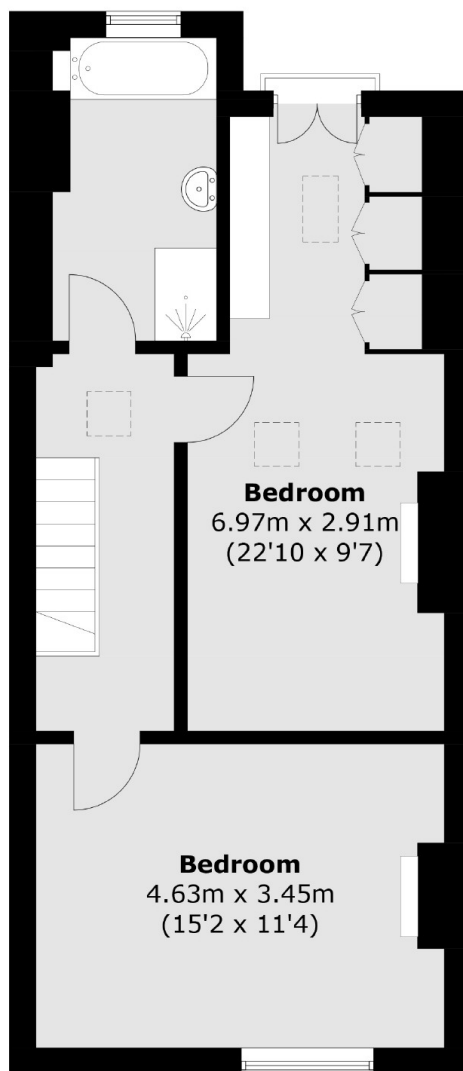
The first floor houses both the master bedroom and the second bedroom; which has had the ceiling heightened to create an open feel with a walk in wardrobe leading out to the Juliette balcony, to the rear of this floor is a large four piece bathroom benefiting from extra size due to the rear extension.



Theresa Road, London, W6



Ground Floor



First Floor

Total area (approx.): 106.3 sq. m (1,144.2 sq. ft)