



Flora Gardens, W6

£500,000

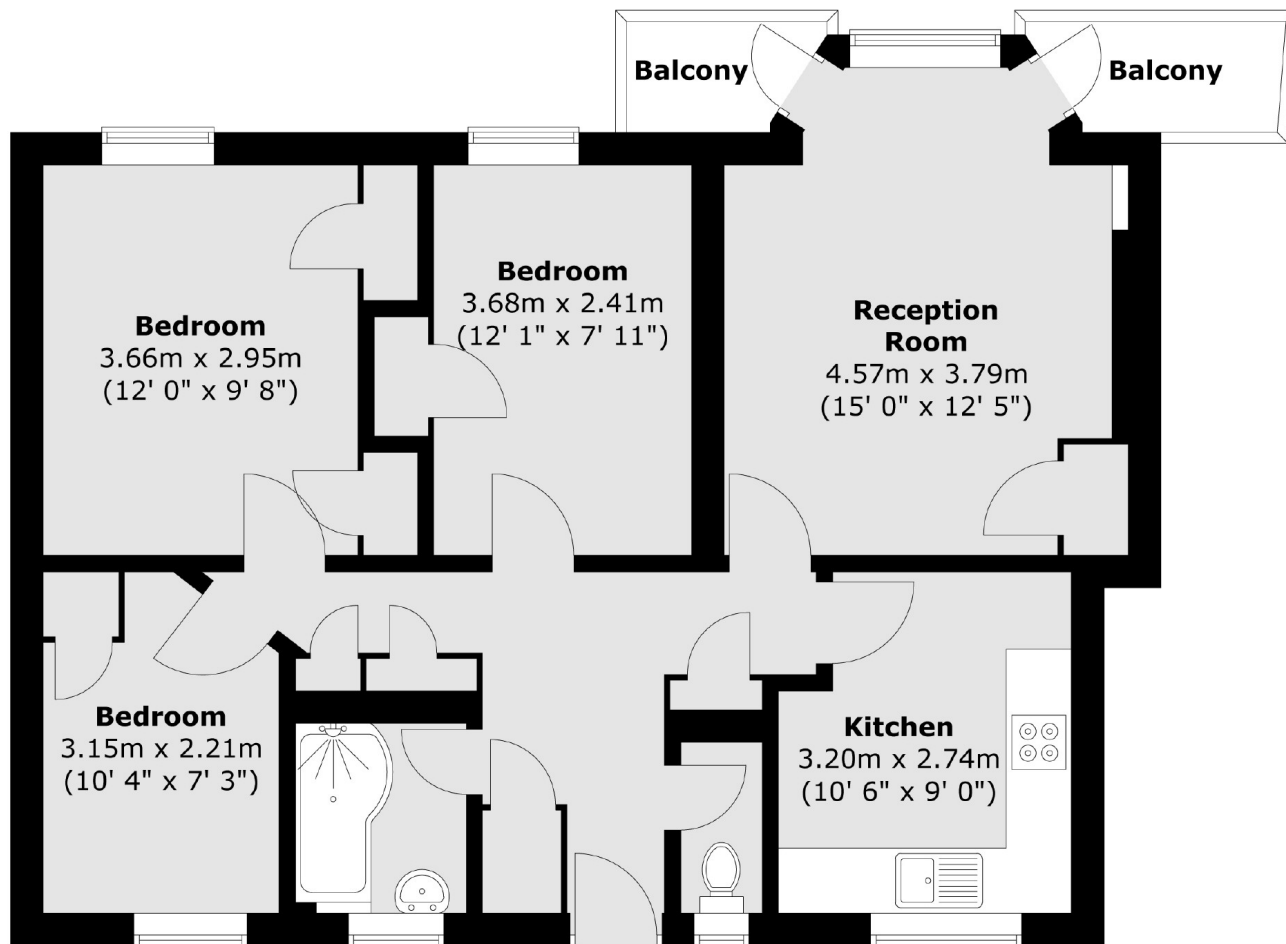
This spacious three double bedroom purpose built apartment is in good order throughout and benefits from lift access, communal grounds and two balconies.

Flora Gardens lies between King Street, with its many shops and restaurants, and Brackenbury Village. Ravenscourt Park station is close by and also Ravenscourt Park is directly opposite. The River Thames with its great pubs and riverside walks is within easy reach.

Features

- Three Double Bedrooms
- Separate Kitchen
- Two Balconies
- Communal Grounds
- Close To Transport
- Chain Free

Flora Gardens, London, W6



Total area (approx.) : 71.7 sq. m (772 sq. ft)
Total balcony area (approx.) : 3.9 sq. m (42 sq. ft)