



King Street, W6

£350,000

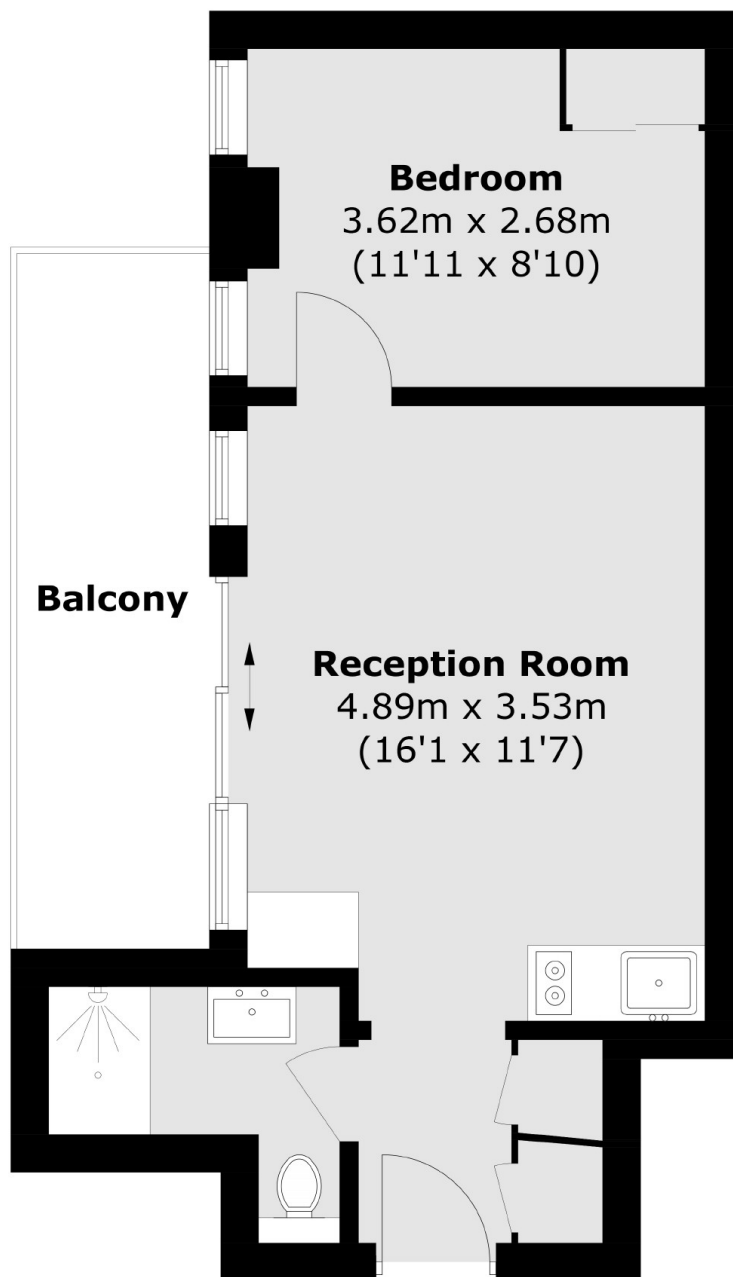
This well presented modern one bedroom apartment with private outside space is located on King Street, moments from Ravenscourt & Hammersmith stations.

King Street is a vibrant and busy shopping destination with a variety of shops, bars and restaurants, as well as excellent transport links from Ravenscourt & Hammersmith stations.

Features

- One Bedroom
- Long Lease
- Modern Throughout
- Private Outside Space
- Close To Amenities
- Close To Transport

King Street, London, W6



Total area (approx.): 35.0 sq. m (346.7 sq. ft)
Balcony: 8.4 sq. m (90.4 sq. ft)