



Studland Street, W6

£1,350,000

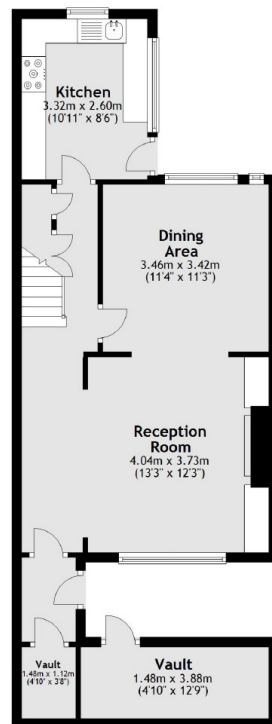
This five bedroom house is well proportioned over four storeys and measures just shy of 2000sq feet in size, the property benefits from being moments from Ravenscourt Park & Hammersmith stations as well as a short walk to the river.

Studland Street is superbly located within a few minutes of both Ravenscourt Park & Hammersmith underground and a stone's throw from King Street, which offers all the main high street shops, restaurants and pubs, the River Thames and its river side walks are also moments away.

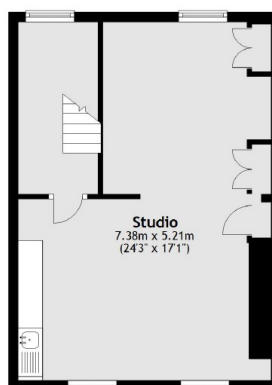
Features

- Five Bedrooms
- Two Bathrooms
- Two Off-Street Parking Spaces
- Prime Location
- Potential For Modernisation
- Ravenscourt Park

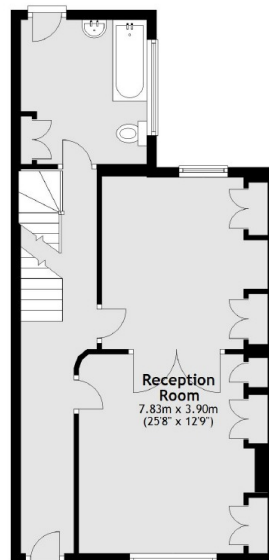
Studland Street, London, W6



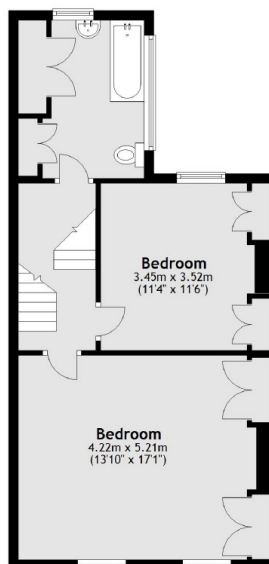
Lower Ground Floor



Second Floor



Ground Floor



First Floor

Main area: Approx. 185.5 sq. metres (1996.8 sq. feet)
Plus vault, approx. 7.5 sq. metres (81.3 sq. feet)

Dexters

Hammersmith
164-166 King Street
London
W6 0QU
Sales
020 8939 6061

Energy Rating: D. We aim to make our particulars both accurate and reliable. However they are not guaranteed; nor do they form part of an offer or contract. If you require clarification on any points then please contact us, especially if you're traveling some distance to view. Please note that appliances and heating systems have not been tested and therefore no warranties can be given as to their good working order.

RICS Regulated
Estate Agent
and Letting Agent

dexters.co.uk