



Studland Street, W6

£1,350,000

This five bedroom house is well proportioned over four storeys and measures just shy of 2000sq feet in size, the property benefits from being moments from Ravenscourt Park & Hammersmith stations as well as a short walk to the river.

Studland Street is superbly located within a few minutes of both Ravenscourt Park & Hammersmith underground and a stone's throw from King Street, which offers all the main high street shops, restaurants and pubs, the River Thames and its river side walks are also moments away.

Features

- Five Bedrooms
- Two Bathrooms
- Two Off-Street Parking Spaces
- Prime Location
- Potential For Modernisation
- Ravenscourt Park

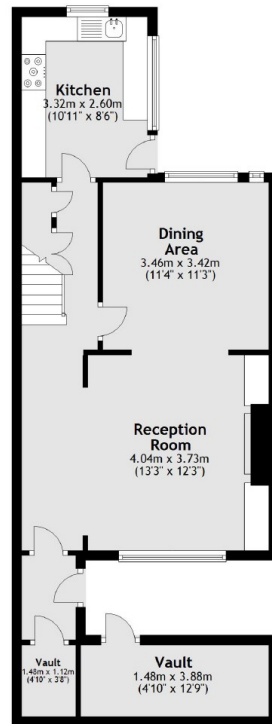


Studland Street, W6

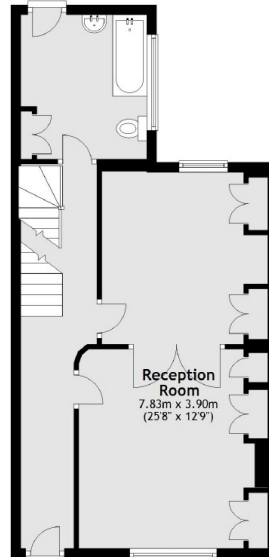
Spread over four floors and just under 2000sq feet this property features a large dual reception, kitchen dining space, two off-street parking spaces and has been recently redecorated internally and externally.



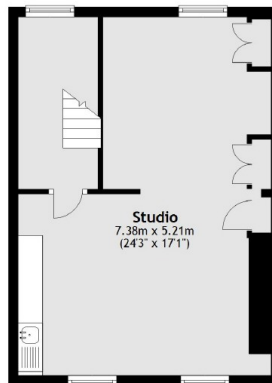
Studland Street, London, W6



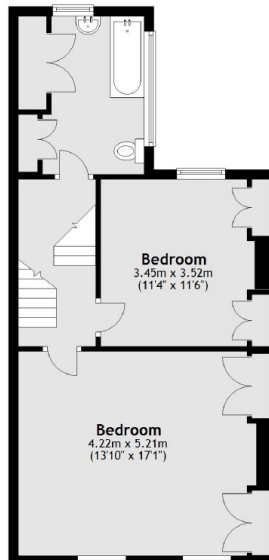
Lower Ground Floor



Ground Floor



Second Floor



First Floor

Main area: Approx. 185.5 sq. metres (1996.8 sq. feet)
Plus vault, approx. 7.5 sq. metres (81.3 sq. feet)