



Queen Caroline Street, W6

£650,000

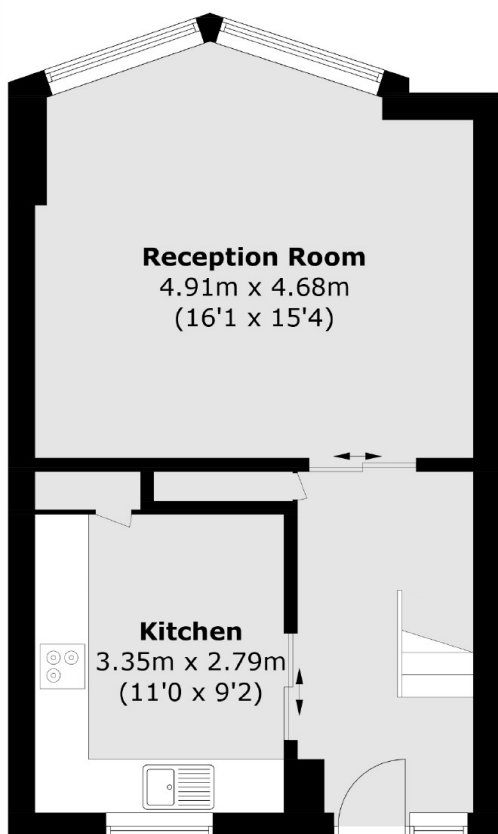
This beautiful split-level apartment is centrally located for the amenities of Hammersmith and is situated on the bank of the River with direct views of the Hammersmith Bridge. Queen Caroline Street is conveniently located for Hammersmith amenities and excellent transport links.

Queen Caroline street is located moments from the Thames with views across Hammersmith bridge while being centrally located for the full range of amenities and transport links on offer.

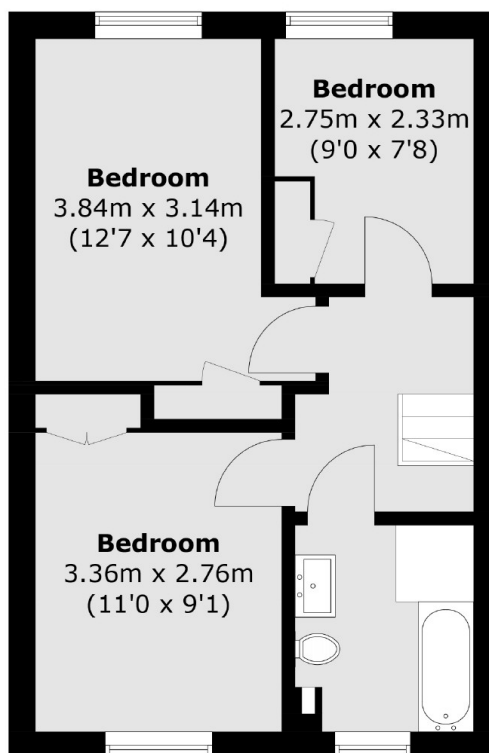
Features

- Fully Renovated
- Split Level
- River Views
- Over 800Sq Feet
- Three Bedrooms
- Chain Free

Queen Caroline Street, London, W6



Second Floor



Third Floor

Total area (approx.): 78.7 sq. m (847.1 sq. ft)