



Hammersmith Grove, W6

£575,000

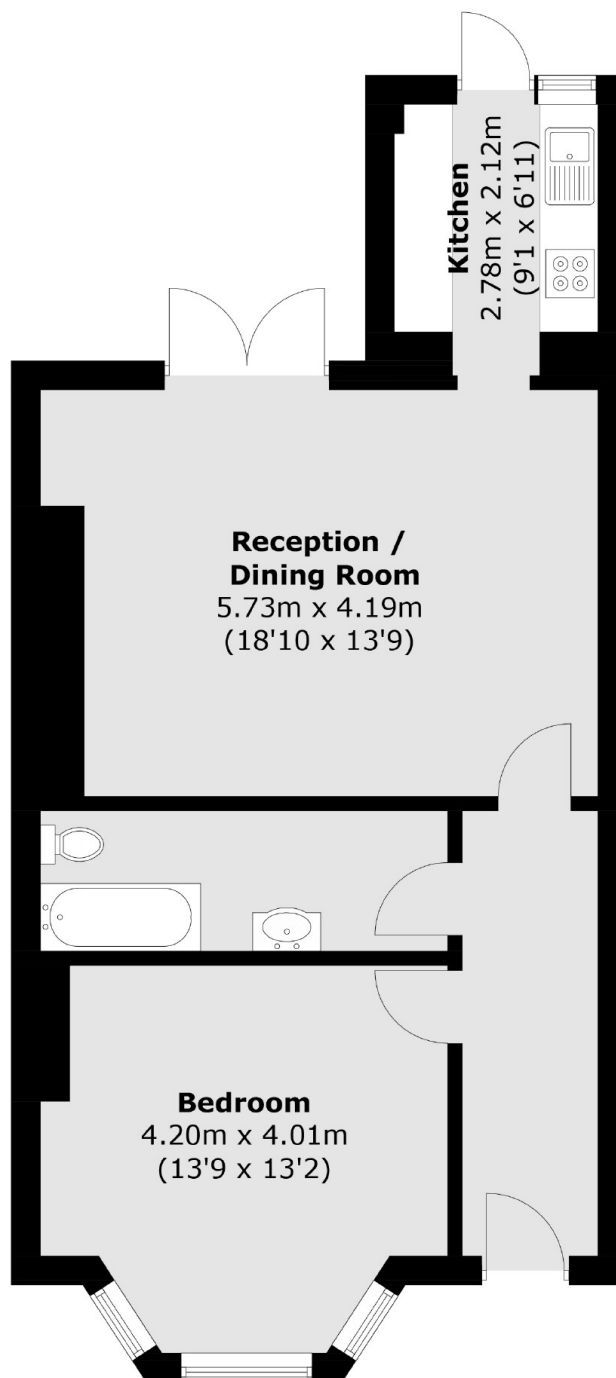
This large one bedroom garden flat is located on a tree lined road in the heart of Hammersmith. The flat has been newly refurbished to a high standard and would make a wonderful home for a single professional or couple.

Hammersmith Grove is a popular West London address, with Chiswick to the West. Westfield London shopping complex is close by as well as the green spaces of Brook Green and Ravenscourt Park.

Features

- One Bedroom
- One Bathroom
- Large Garden
- Recently Refurbished
- Brackenbury Village
- Hammersmith Broadway

Hammersmith Grove, London, W6



Total area (approx.): 60.5 sq. m (651.2 sq. ft)