



Nasmyth Street, W6

£995,000

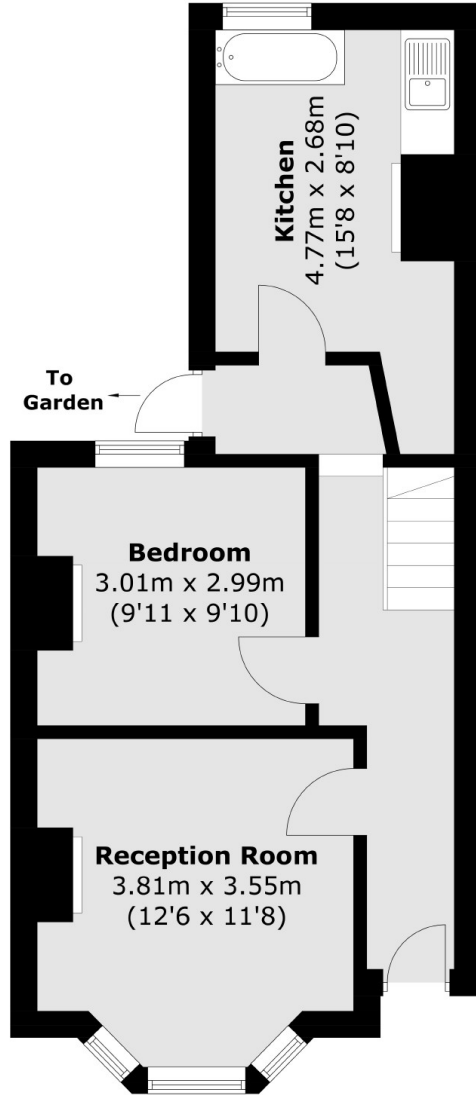
This is a rare opportunity to purchase a three bedroom freehold cottage with a large rear private garden located on a sought after road in Brackenbury Village. This property has potential to modernise and would make a wonderful home or investment.

Nasmyth Street is ideally located 0.3 miles from Ravenscourt Park Tube Station and Hammersmith Tube Station (District, Hammersmith and City, Circle and Piccadilly Lines). The River Thames and Ravenscourt Park are also close by.

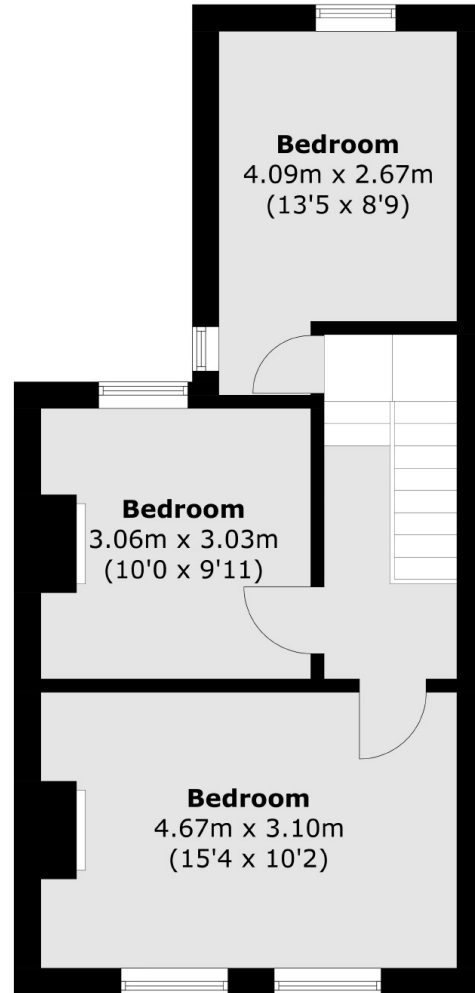
Features

- Three Bedrooms
- Garden
- Freehold
- Brackenbury Village
- Potential To Modernise
- No Chain

Nasmyth Street, London, W6



Ground Floor



First Floor

Total area (approx.): 83.3 sq. m (896.6 sq. ft)