



Queen Caroline Street, W6

£450,000

This two double bedroom flat with use of a lift, is moments from the River Thames and Hammersmith Broadway. The property has a separate kitchen and large reception room.

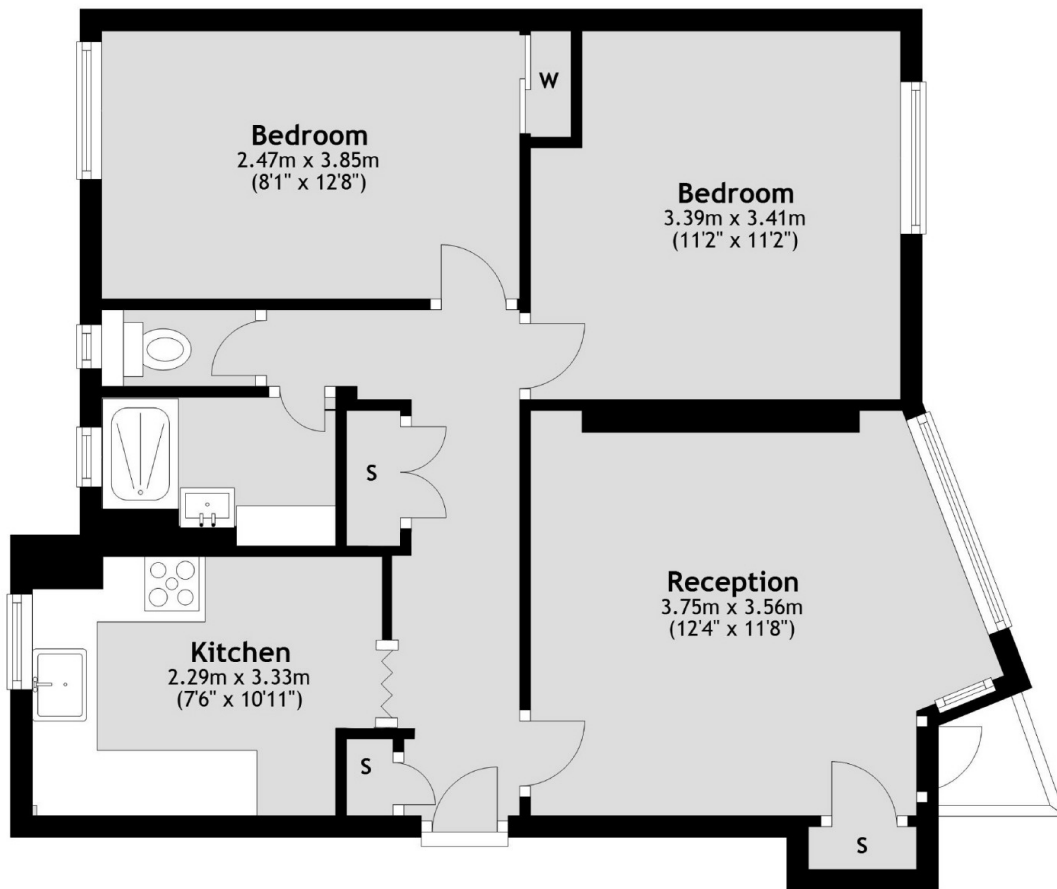
Queen Caroline Street is ideally located for easy access to the A4, all amenities of King Street and Hammersmith Broadway. It is also close to the bars and restaurants along the river.

Features

- Two Bedrooms
- Large Reception
- London Views
- Lift
- Close To River
- Hammersmith Broadway

Queen Caroline Street, London, W6

Sixth Floor



Main area: Approx. 56.8 sq. metres (611.7 sq. feet)
Plus balconies, approx. 0.9 sq. metres (9.9 sq. feet)

Contact

To arrange a viewing call our office on the number below or visit our website.



Energy Rating: C. We aim to make our particulars both accurate and reliable. However they are not guaranteed; nor do they form part of an offer or contract. If you require clarification on any points then please contact us, especially if you're traveling some distance to view. Please note that appliances and heating systems have not been tested and therefore no warranties can be given as to their good working order.