



Delorme Street, W6

£1,250,000

This four bedroom, two bathroom house is excellently located close to the River Thames and Hammersmith Broadway. This property would make a wonderful home or investment.

Delorme Street is ideally located only moments away from all the amenities of the Fulham Palace Road and Hammersmith Station (District, Piccadilly and Hammersmith and City Line 0.5m).

Features

- Four Bedrooms
- Two Bathrooms
- Open Plan
- Plenty Of Light
- River Thames
- Hammersmith Broadway

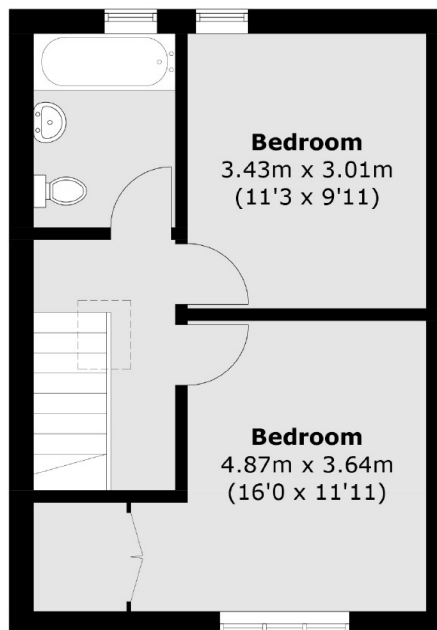


Delorme Street, W6

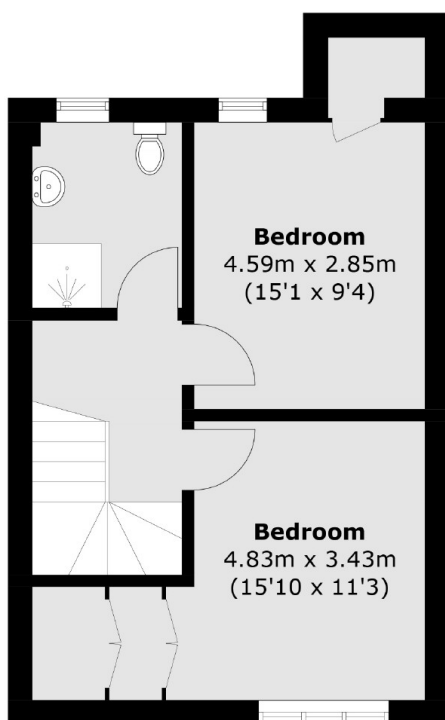
As you enter on the raised ground floor, you are presented with an open plan kitchen/living space with high ceilings and plenty of light. There are two bedrooms on the first floor with a family bathroom and two further bedrooms on the lower ground floor with another bathroom. This property is in good condition throughout.



Delorme Street, London, W6



First Floor



Lower Ground Floor



Ground Floor

Total area (approx.): 105.4 sq. m (1,134.5 sq. ft)