



## St. Peters Grove, W6

£691 Per week

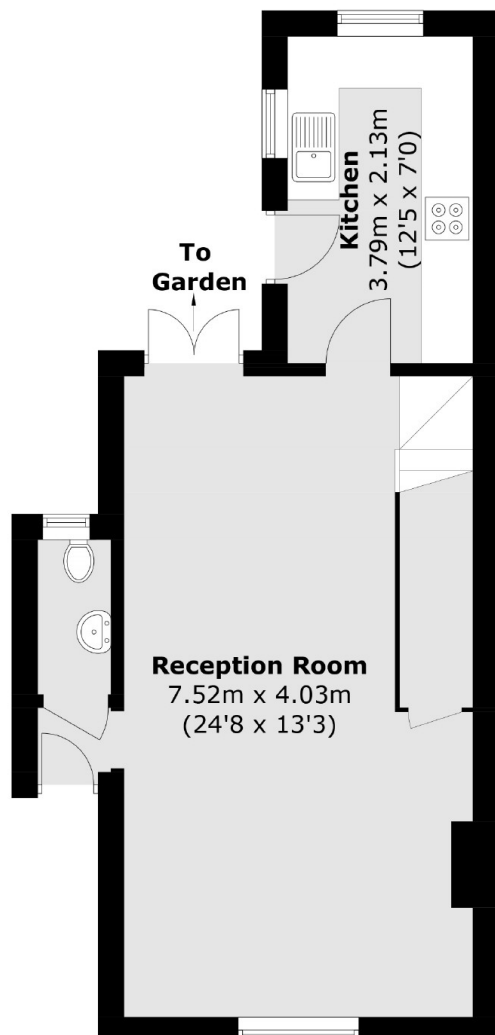
An exciting opportunity to rent a two bedroom semi-detached house with a private garden within the highly sought after St. Peters Conservation Area. Arranged over two floors, this property has been recently re-decorated throughout and fitted with brand new kitchen appliances, as well as a newly refurbished bathroom. There is plenty of storage throughout.

St. Peters Grove is located within a few minutes walk to Ravenscourt Park Station and within close distance to the amenities of both King Street and Chiswick High Road.

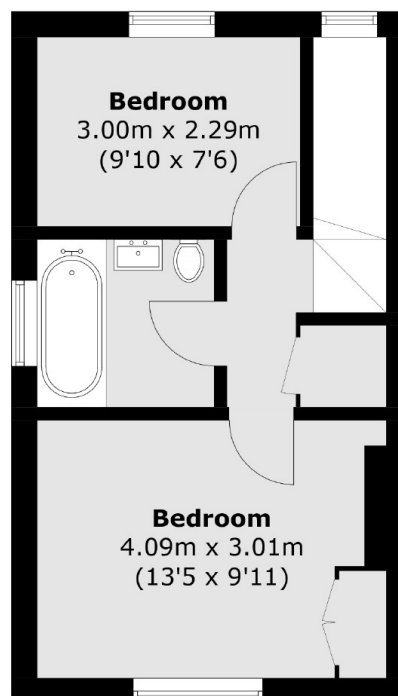
### Features

- Two Bedroom House
- Private Garden
- Newly Refurbished Bathroom
- Good Storage
- Ravenscourt Park
- St Peters Conservation Area

# St. Peters Grove, London, W6



**Ground Floor**



**First Floor**

Total area (approx.): 72.0 sq. m (775.0 sq. ft)