



## Greyhound Road, W6

### £350,000

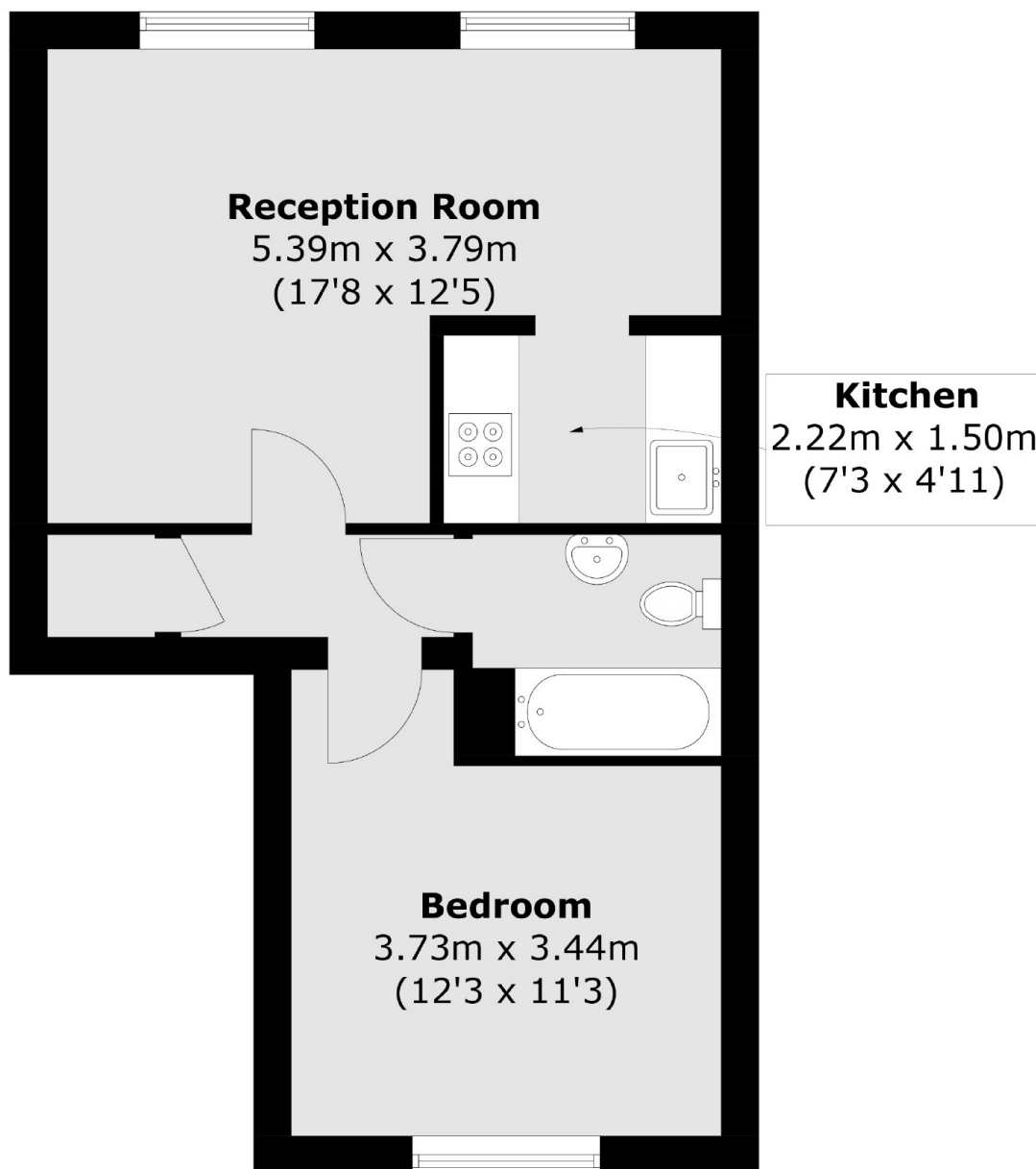
This is a spacious one bedroom flat benefiting from an open plan kitchen and living space. The building provides an attractive communal garden and is within walking distance to Hammersmith Broadway and the River Thames.

The apartment is close to Hammersmith and Barons Court stations and within a stone's throw away from the River Thames towpath and all the local bars and shops on the Fulham Palace Road.

### Features

- One Bedroom
- Chain Free
- High Ceilings
- Open Plan
- Communal Garden
- Hammersmith Broadway

# Greyhound Road, London, W6



Total area (approx.): 39.0 sq. m (419.8 sq. ft)