

Hammersmith Road, W6

£576 Per week

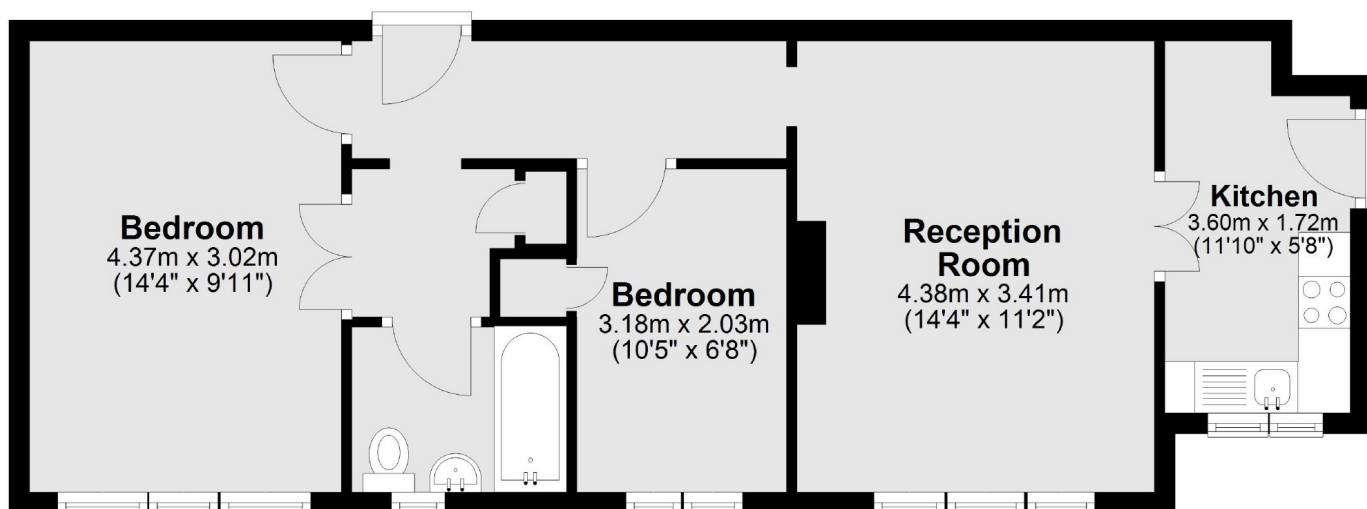
An immaculately presented, two bedroom apartment on the third floor of a popular residential development. The property offers two bedrooms, a large reception room, separate kitchen and bathroom. This property has lift access.

Latymer Court is situated on the north side of Hammersmith Road, moments away from the underground station, bus services, shopping on High Street Kensington and King Street.

Features

- Newly Refurbished
- Two Bedrooms
- Third Floor
- Lift Access
- 24hr Porter
- Close to Tube

Hammersmith Road, London, W6



Total area: approx. 54.0 sq. metres (581.1 sq. feet)