



Southerton Road, W6

£692 Per week

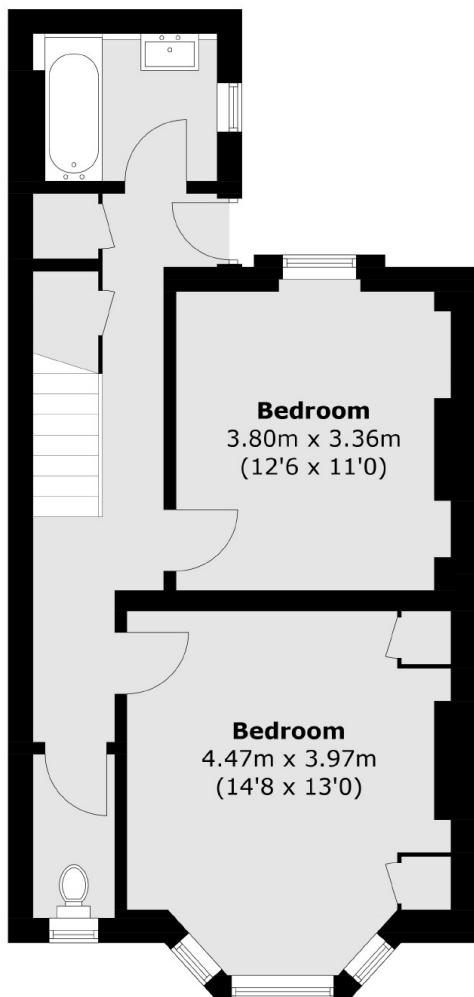
A three bedroom maisonette with a private garden within the highly sought-after Brackenbury Village area. The flat is arranged over two floors, comprising a spacious living area with high ceilings and period features, a separate eat-in kitchen, three bedrooms, main bathroom and a private split-level garden.

Southerton Road is located within the Brackenbury Village area and is within a 5 minute walk to Hammersmith Station and the many amenities of Hammersmith Broadway.

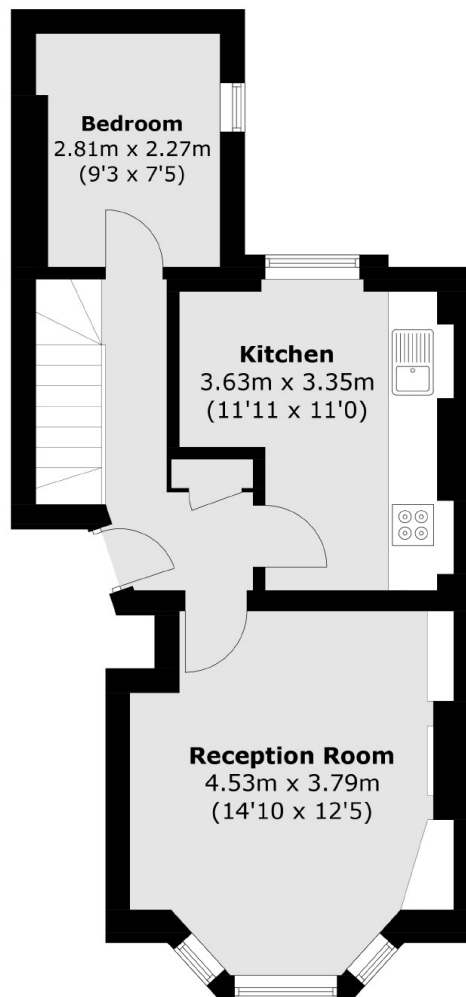
Features

- Three Bedrooms
- Private Garden
- Split-Level
- Period Features
- High Ceilings
- Brackenbury Village

Southerton Road, London, W6



Lower Ground Floor



Ground Floor

Total area (approx.): 88.9 sq. m (956.9 sq. ft)