



## Greyhound Road, W6

£575,000

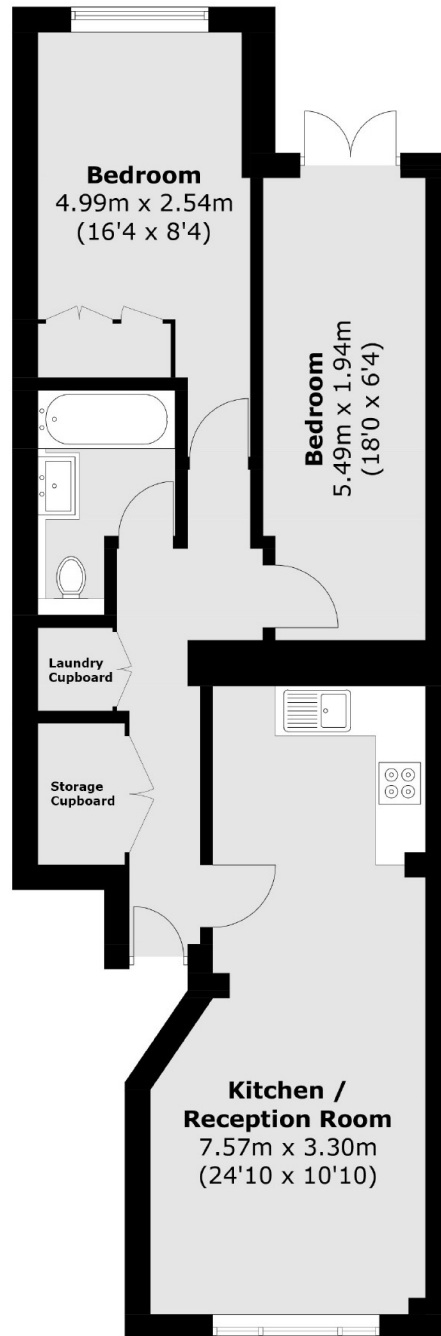
This two bedroom flat benefits from an open plan kitchen living space and a large private garden. This property is in excellent condition and would make a wonderful home or investment.

The apartment is close to Hammersmith and Barons Court stations and within a stone's throw away from the River Thames towpath and all the local bars and shops on the Fulham Palace Road.

### Features

- Two Bedrooms
- One Bathroom
- Garden
- Open Plan
- Ground Floor
- Barons Court

# Greyhound Road, London, W6



Total area (approx.): 60.3 sq. m (649.0 sq. ft)