



Leamore Street, W6

£923 Per calendar month

This large four bedroom family home has been finished to accommodate the modern family. With two private terraces, a large eat in kitchen and an extra study, the property offers ample living space.

Leamore Street is located under a quarter mile from Hammersmith Broadway offering great transports links, providing easy access to shops, bars and restaurants close by.

Features

- Large Family Home
- Three Bedrooms
- Extra Study
- Immaculate Finish
- Double Reception
- Built In Storage



Leamore Street, W6

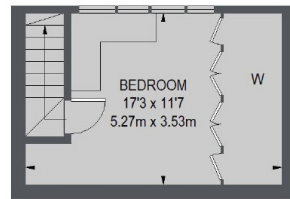
Having been lived in by the owners for several years prior to renting this property has been entirely finished to accommodate the modern family. With three double bedrooms and an additional loft study/day room this property offers ample living space.

Two main features this house has to offer are the double aspect reception room as well as the huge eat in kitchen with enough space to accommodate a large dining table, perfect for family dining.

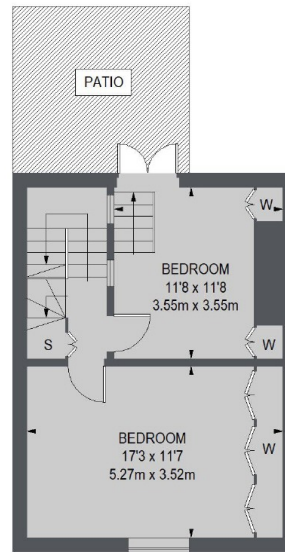
With each of the bedrooms offering bespoke built in wardrobes there is no need for additional furniture. Two of the bedrooms offer direct access to private outdoor space, one with sliding doors leading onto a private patio and another with french doors to a private terrace. The original wood flooring throughout, and modern stylish bathroom gives this house a contemporary look and comfortable family living.



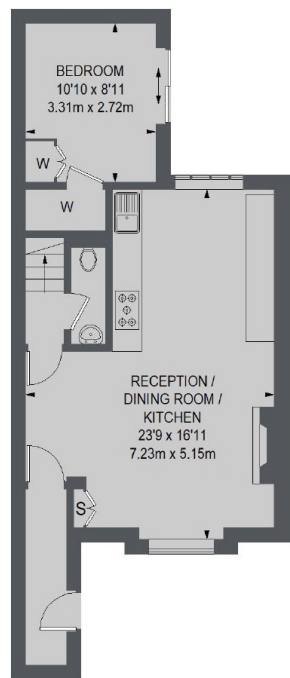
Leamore Street, London, W6



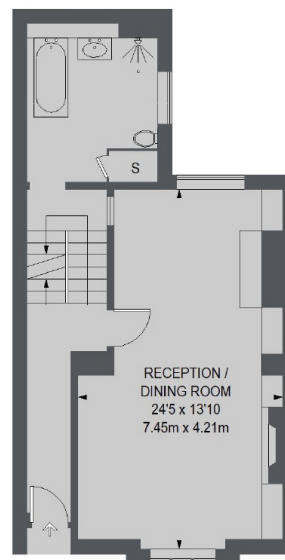
SECOND FLOOR



FIRST FLOOR



LOWER GROUND FLOOR



GROUND FLOOR

TOTAL APPROX. FLOOR AREA
1661 SQ. FT. (154.32 SQ. M.)