



Vinery Way, W6

£725,000

This is an immaculately presented third floor apartment set in a modern gated development in Brackenbury Village built in 2017 with underground parking, concierge and a lift. This flat offers open plan living and kitchen space with direct access to a private balcony.

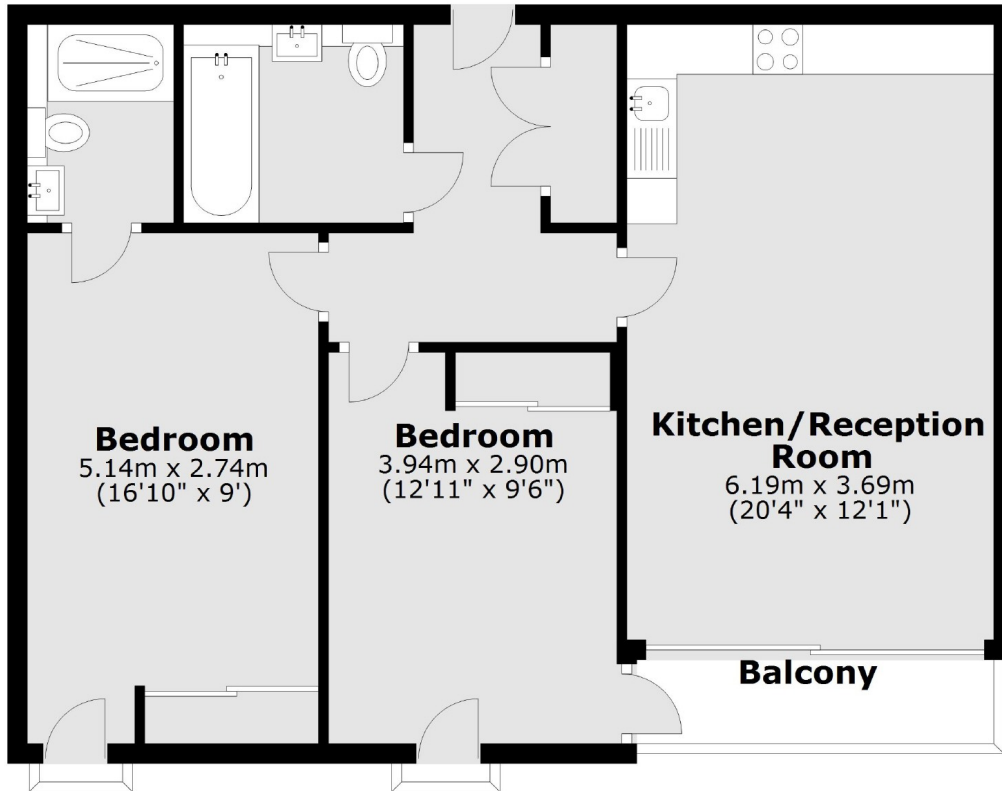
Vinery Way is half a mile from Hammersmith tube stations, the River Thames and Ravenscourt Park. Perfect for both Shepherds Bush market and Westfield shopping centre.

Features

- Two Bedrooms
- Two Bathrooms
- Gated development
- Balcony
- Allocated Parking Space
- Lift

Vinery Way, London, W6

Third Floor



Main area: Approx. 66.4 sq. metres (714.4 sq. feet)
Plus balconies, approx. 3.5 sq. metres (37.4 sq. feet)