



Goldhawk Road, W6

£545,000

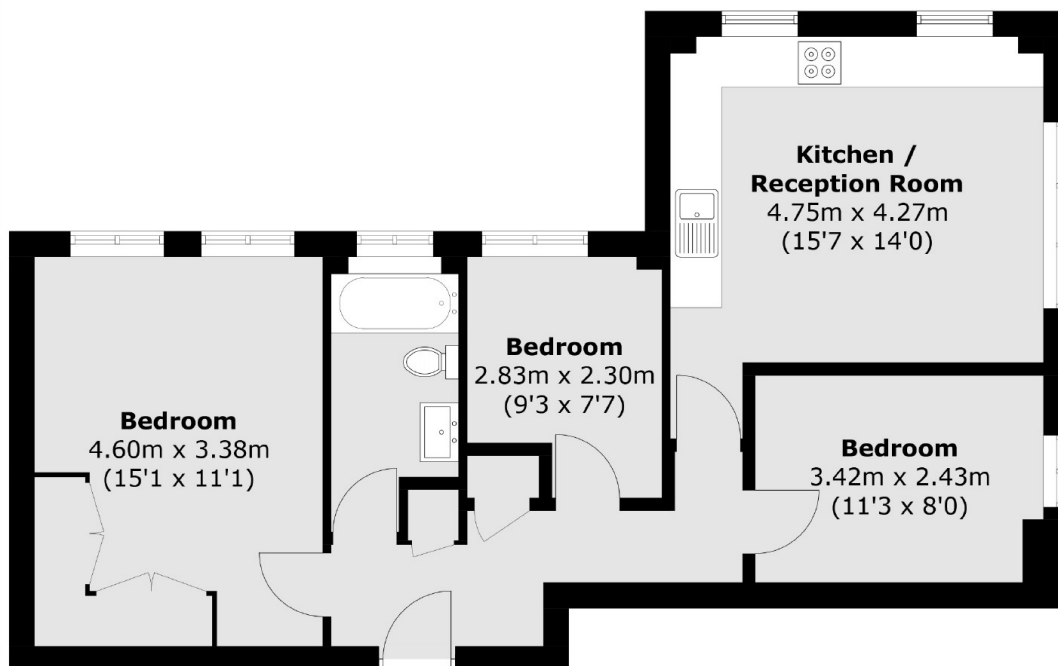
A recently refurbished three bedroom flat located close to Stamford Brook and Ravenscourt Park. This property would make a wonderful home or investment.

Stamford Court also benefits from private parking, lift access and an on site porter. The closest tube station is Stamford Brook however Hammersmith Broadway is also walking distance.

Features

- Three Bedrooms
- Open Plan
- Recently Refurbished
- Off-Street Parking
- Lift
- Porter

Goldhawk Road, London, W6



Total area (approx.): 61.9 sq. m (666.3 sq. ft)