



Westcroft Square, W6

£450,000

This apartment is a perfect home for a first time buyer or a buy to let investor. This charming two bedroom first floor apartment is located in the desirable garden square and has two bedrooms and a bay window overlooking the square.

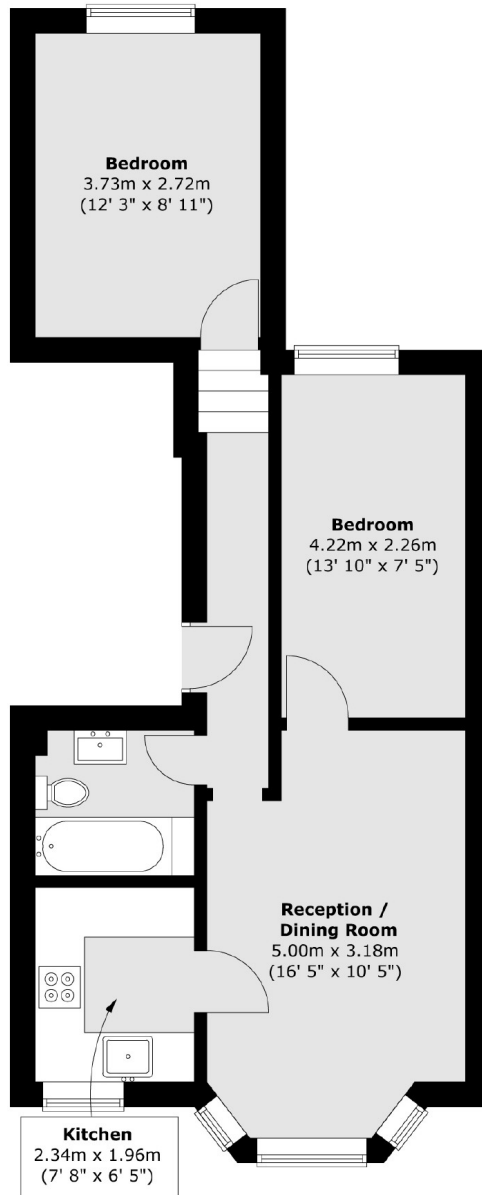
Westcroft Square is just off King Street, opposite St Peter's Square. The garden square is beautifully maintained and the shops, restaurants and transport facilities on your doorstep are wonderful to have. Your nearest station is Stamford Brook.

Features

- Two Bedrooms
- Separate Kitchen
- First Floor
- High Ceilings
- Garden Square
- Ravenscourt Park

Westcroft Square, London, W6

First Floor



Total area (approx.) : 49 sq. m (527 sq. ft)