



Hamlet Gardens, W6

£425,000

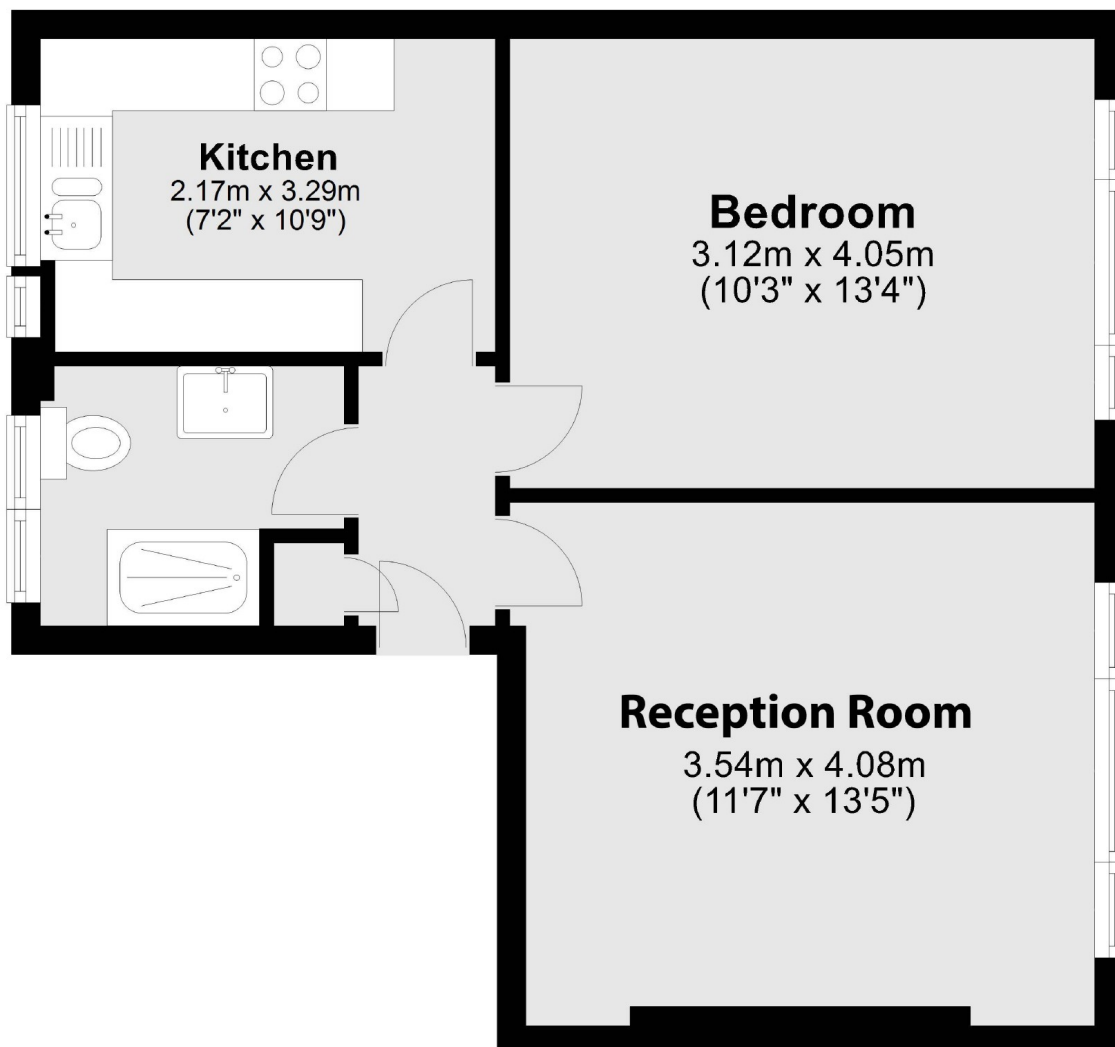
Situated close to Ravenscourt Park, this large one bedroom apartment offers good living space, a separate kitchen and a double bedroom. This flat would make a wonderful home or investment.

Hamlet Gardens is located just behind King Street with it's array of restaurants, bars and cafes. There are excellent transport links by road or rail, the A4 is nearby and the District line, via Ravenscourt Park, is just a few minutes walk.

Features

- One Bedroom
- Share of Freehold
- Separate Kitchen
- Large reception Room
- Recently Refurbished
- Ravenscourt Park

Hamlet Gardens, London, W6



Total area: approx. 40.8 sq. metres (439.0 sq. feet)