



Vinery Way, W6

£1,200 Per week

A rare opportunity to let a newly built townhouse in the heart of Brackenbury Village. This will make the perfect home for families looking to be close to the many outstanding primary schools such as Godolphin and Latymer School and Ravenscourt

Vinery Way is half a mile from Hammersmith tube stations, the River Thames and Ravenscourt Park. Perfect for both Shepherds Bush market and Westfield shopping centre.

Features

Three Bedrooms
Three Bathrooms
Roof Terrace and Garden
Underground Parking
Space
Gated Development
Brackenbury Village



Vinery Way, London, W6

This property offers a bespoke open plan kitchen and living space with bi-fold doors lead to a secluded private garden. The property is arranged over three floors with three bedrooms, three bathrooms and two large roof terraces.

There are integrated ceiling speakers and underfloor heating throughout. There is also secure underground parking available within the gated development. This house will make the perfect home for families looking to be close to the many outstanding primary schools in the area.

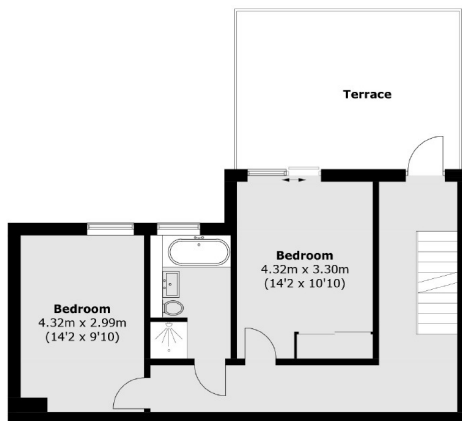




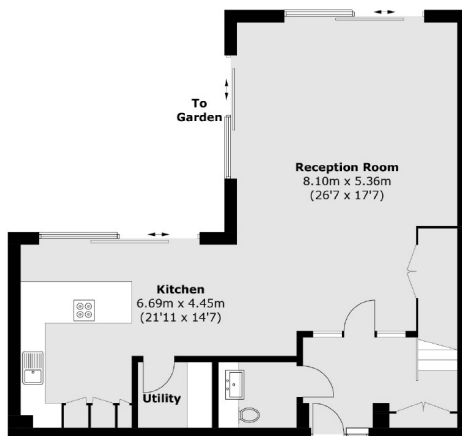
Vinery Way, London, W6



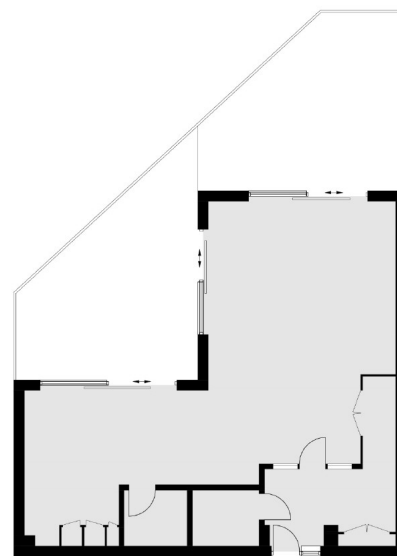
Second Floor



First Floor



Ground Floor



Site Plan

Total area (approx.): 160.9 sq. m (1,731.9 sq. ft)
Terrace (approx.): 41.8 sq. m (450 sq. ft)

Contact

To arrange a viewing call our office on the number below or visit our website.



Energy Rating: B. We aim to make our particulars both accurate and reliable. However they are not guaranteed; nor do they form part of an offer or contract. If you require clarification on any points then please contact us, especially if you're traveling some distance to view. Please note that appliances and heating systems have not been tested and therefore no warranties can be given as to their good working order.