



## Manbre Road, W6

£1,295,000

Situated on the banks of the River Thames this is a spacious two bedroom, two bathroom, fourth floor apartment with magnificent river views. The building offers an excellent standard of security via the on-site concierge.

Located on the river front close to the famous River Cafe, as well as a variety of other pubs, restaurant and river walks. Bishop's Park and the shops, restaurants and other amenities of Fulham Palace Road are very close by.

### Features

1,300 sq. ft  
Two Bedrooms  
River Views  
Lift and Concierge  
Riverside Development  
Hammersmith Station



## Manbre Road, London, W6

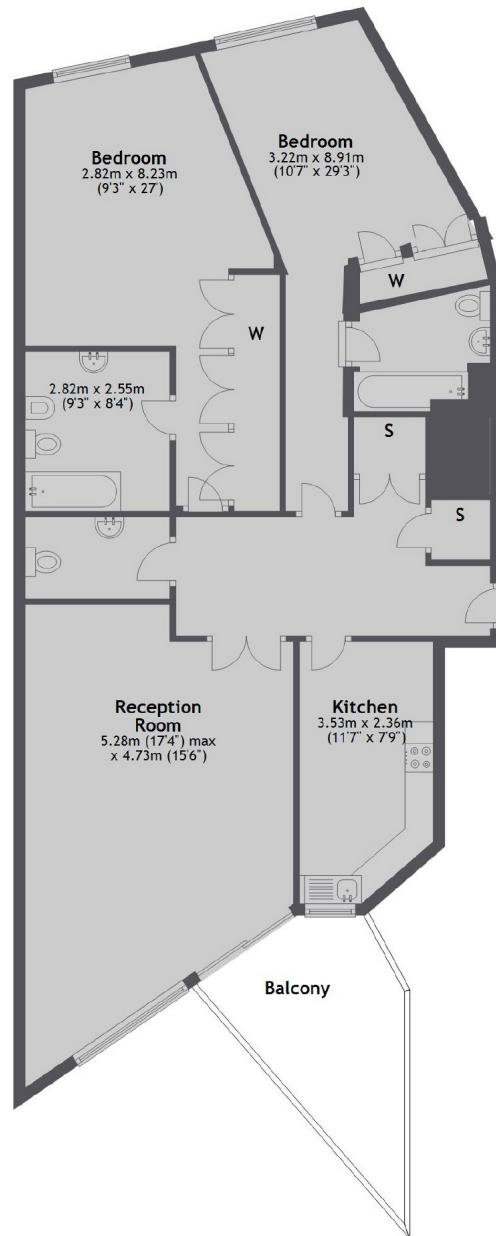
In the popular King Henry's Reach development, the property has a double aspect reception room with access to the private riverside balcony, a separate eat in kitchen, two good sized bedrooms (both with en-suite bathrooms), built in storage and an extra WC.

In addition the building offers two allocated underground parking space.





## Manbre Road, London, W6



Total area: approx. 120.8 sq. metres (1300.5 sq. feet)

### Contact

To arrange a viewing call our office on the number below or visit our website.



Energy Rating: B. We aim to make our particulars both accurate and reliable. However they are not guaranteed; nor do they form part of an offer or contract. If you require clarification on any points then please contact us, especially if you're traveling some distance to view. Please note that appliances and heating systems have not been tested and therefore no warranties can be given as to their good working order.