



IPSIDEN OX10
£25,000 PER MONTH AVAILABLE NOW




Hamptons

THE HOME EXPERTS

{ THE PARTICULARS

Ipsden OX10

£25,000 Per Month
Furnished

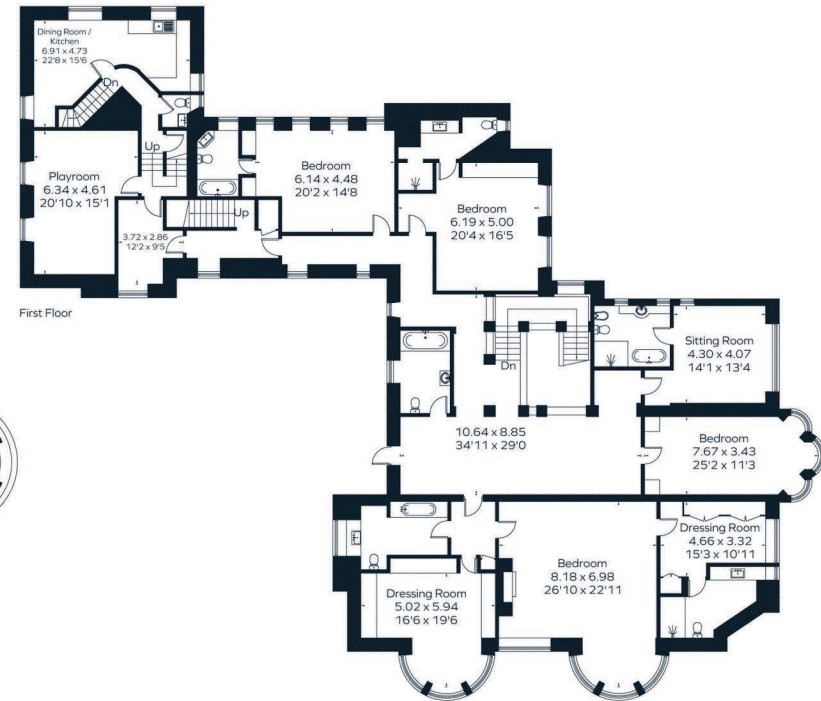
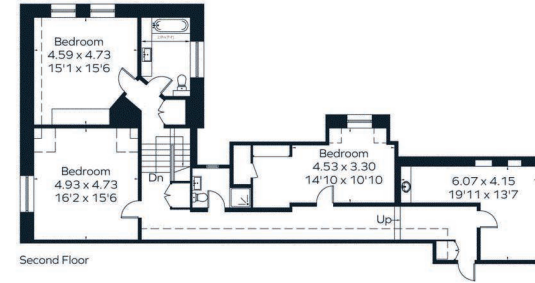
 12 Bedrooms
 8 Bathrooms
 5 Receptions

Council Tax

Hamptons
43 High Street
Marlow, SL7 1BA
01628482598
marlowlettings@hamptons.co.uk
www.hamptons.co.uk



Approximate Area = 1240.1 sq m / 13348 sq ft
 Basement = 22.0 sq m / 21 sq ft
 Total = 1242.3 sq m / 13571 sq ft (Including Garage)
 Including Limited Use Area (18.8 sq m / 202 sq ft)

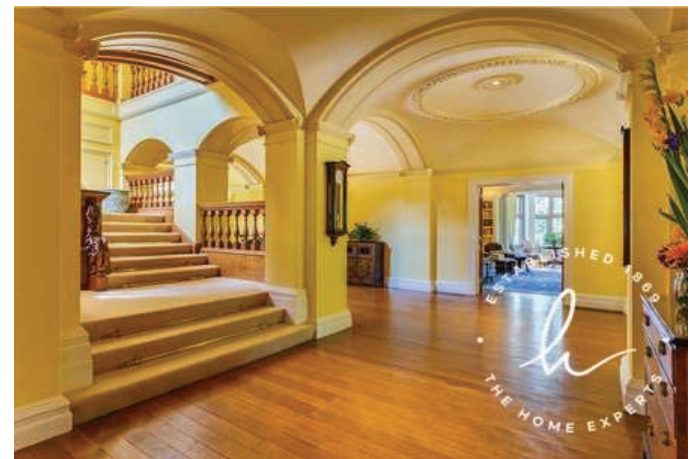


Surveyed and drawn in accordance with the International Property Measurement Standards (IPMS 2: Residential)
 fourwalls-group.com 304314

For Clarification

We wish to inform prospective tenants that we have prepared these particulars as a general guide and they have been confirmed as accurate by the landlord. We have not verified permissions, nor carried out a survey, tested the services, appliances and specific fittings. Room sizes are approximate and measurement figures rounded: they are taken between internal wall surfaces and therefore include cupboards/shelves, etc. Accordingly, they should not be relied upon for

carpets and furnishings. It should also be noted that all fixtures and fittings, carpeted, curtains/blinds, kitchen equipment and garden statuary, whether fitted or not, are deemed removable by the landlord unless specifically itemised with these particulars. Please enquire in office or on our website for details on holding deposit and tenancy deposit figures.



EST. 1962
THE HOME EXPERTS