

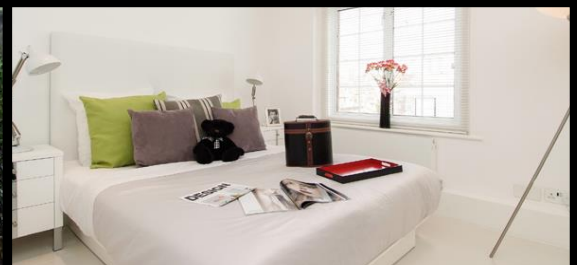


London Central Portfolio Limited
Residential Funds and Asset Management

1 Bedroom Flat To Let

Marble Arch Apartments, Harrowby Street - W1

£460 Per Week



1



1



1



Porter



Marble Arch

'A newly refurbished one bedroom flat in a portered block with excellent access to the West End. The flat further benefits from the nearby Heathrow Express and the numerous lines to the City

**Marble Arch Apartments,
Harrowby Street, W1**
Approx. Gross Internal Area *
338 Sq Ft - 31.40 Sq M




Third Floor

Illustration For Identification Purposes Only. Not To Scale
*Floorplan Drawn According To RICS Guidelines
© www.totalvista.co.uk 2012 (aa)



For more information contact Liam or Rob at LCP on 020 7723 1733

Property Acquisition ● Design & Refurbishment ● Letting & Rental Management ● Fund & Asset Management

London Central Portfolio Ltd, 116 Seymour Place, London W1H 1NW E: lcp@londoncentralportfolio.com Tel: +44 (0)207 723 1733