

For Sale



LCP/PrivateOffice
est.1990

Westbourne Crescent, Lancaster Gate W2

+44 (0) 207 723 1733 / sales@lcpprivate.com

£995,000

Westbourne Crescent

£995,000

A well laid out two double bedroom, two bathroom, fourth floor apartment (with lift) in an attractive stucco fronted period building between Lancaster Gate and Paddington Stations.

The property comprises principal bedroom with ensuite shower room, bedroom two, bathroom and a south facing, open plan kitchen / reception room.

Westbourne Crescent is a pretty street running between Westbourne Terrace and Gloucester Terrace and is excellently positioned for Paddington Station (Bakerloo, District, Circle and Hammersmith & City Underground lines, the Elizabeth line, Heathrow Express and National Rail) and Lancaster Gate Station (Central Line). Hyde Park and Kensington Gardens are only moments away.

Asking Price: £995,000 STC

Lease: Share of Freehold

Service Charge: £3,714 per annum

Ground Rent: Peppercorn

EPC Rating: D

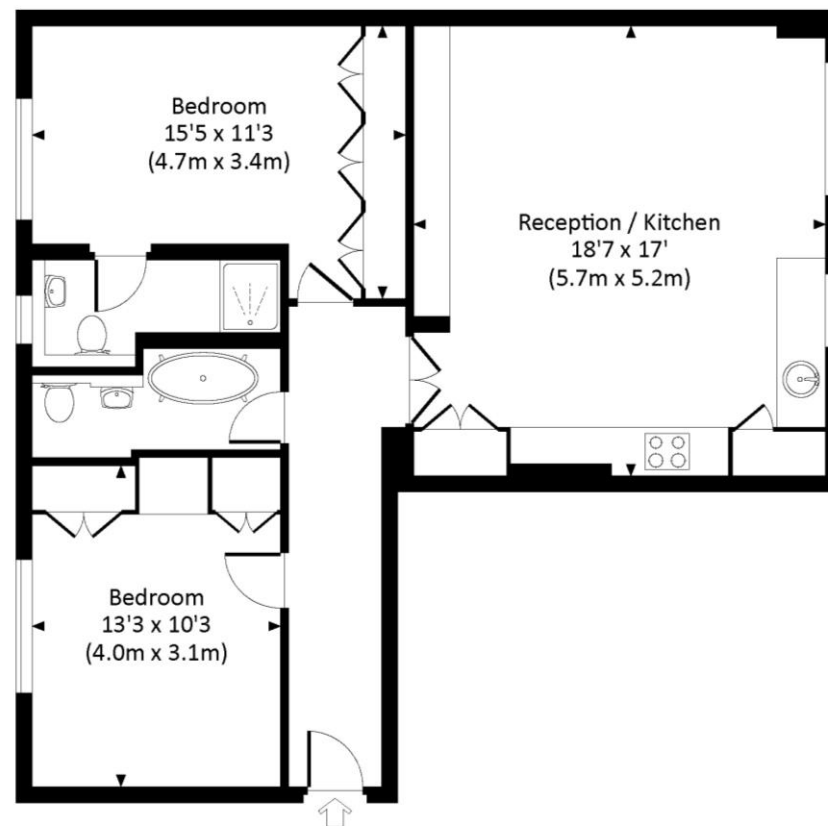






WESTBOURNE CRESCENT, W2

Approx. gross internal area
794 Sq Ft. / 73.8 Sq M.



FOURTH FLOOR

Please note none of the statements contained in these particulars as to this property are to be relied on as statements or representation of fact. It should also be noted that amenities and appliances have not been tested.



All measurements have been made in accordance with RICS Code of Measuring Practice which are approximate only and only for illustrative purposes. For the avoidance of doubt, Dowling Jones Design shall not be liable for any reliance on these measurements. © 2016 www.dowlingjones.com 020 7610 9933



LCP

est.1990

+44 (0)207 723 1733
LCP House, Ogle Street,
London, W1W 6HU

contact@lcpprivate.com