

LCP/PrivateOffice

est.1990

St Michael's Street, Paddington W2
Asking Price £515,000 STC



Description

This one bedroom, ground floor flat is situated in a peaceful gated mews off St Michael's Street. The property consists of a good sized reception room and semi open plan kitchen, double bedroom, bathroom and private patio.

Nearby transport links include Paddington (Heathrow Express, Network Rail, Bakerloo, District, Circle, Hammersmith & City and Elizabeth Lines) in addition to Lancaster Gate (Central Line). The spaces of Hyde Park and Kensington Gardens are close by.



Accommodation

Reception Room | Semi Open Plan Kitchen | Bedroom | Bathroom | 415 sq ft (39 sq m)

Asking Price

£515,000 STC

Lease

Share of Freehold

Service Charge

£1,766 per annum (inc. reserves)

Ground Rent

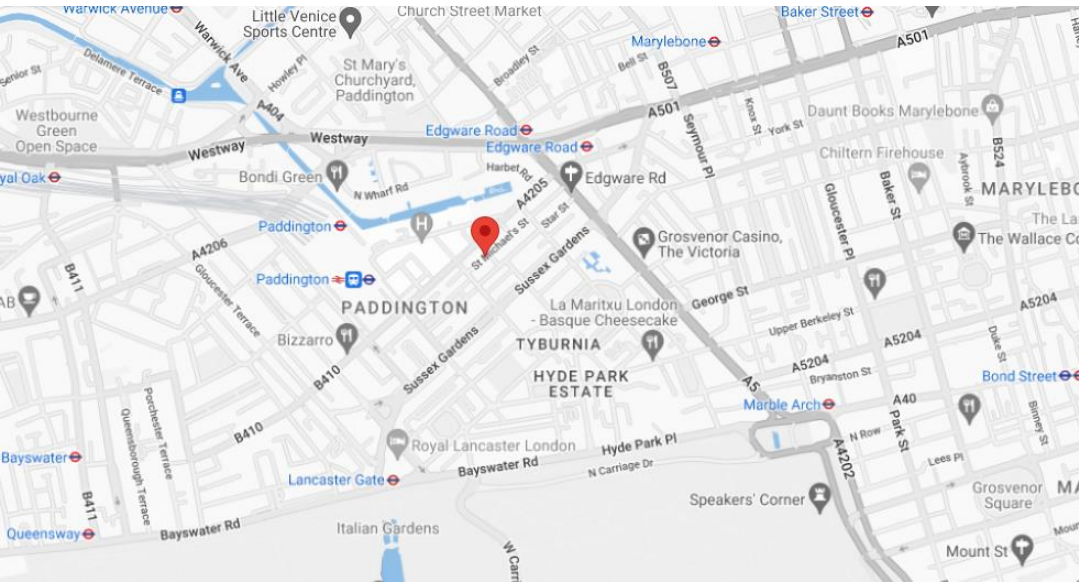
Peppercorn

Council Tax

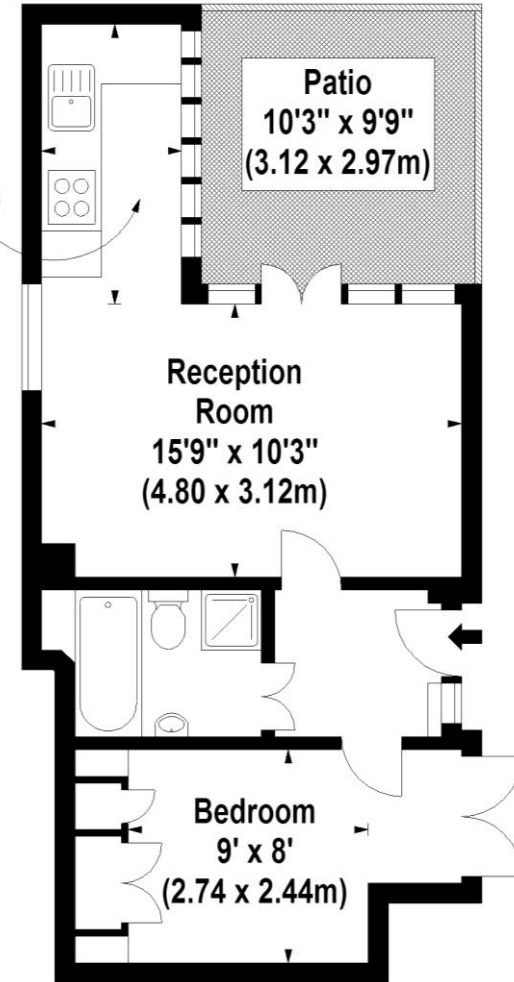
Westminster Band D

St. Michael's Street, W2

Approx. Gross Internal Area *
415 Sq Ft - 38.55 Sq M



Kitchen
10'6" x 5'3"
(3.20 x 1.60m)



Ground Floor

Score	Energy rating	Current	Potential
92+	A		
81-91	B		
69-80	C		76 C
55-68	D	60 D	
39-54	E		
21-38	F		
1-20	G		

Please note none of the statements contained in these particulars as to this property are to be relied on as statements or representation of fact. It should also be noted that amenities and appliances have not been tested.

Illustration For Identification Purposes Only. Not To Scale
*Floorplans Drawn According To RICS Guidelines
Floorplans Supplied By Totalvista
Tel : 07976 232758 www.totalvista.net
Copyright Totalvista 2005 (br)



LCP House, Ogle Street, London W1W 6HU
sales@lcpprivate.com
020 7723 1733





LCP House, Ogle Street, London W1W 6HU
sales@lcpprivate.com
020 7723 1733

LCP/PrivateOffice

est.1990

LCP House, Ogle Street, London W1W 6HU
sales@lcprivate.com
020 7723 1733