

LCP/PrivateOffice

est.1990

Halsey Mews, Chelsea SW3
Asking Price £3,755,000 STC



Description

A modern, five bedroom mews house set behind the period terrace of Halsey Street and very well located for Sloane Square and South Kensington.

The accommodation comprises an eat-in kitchen, reception room, dining room and downstairs WC, five bedrooms, three bath / shower rooms and a covered car port. There is also a roof terrace.

Halsey Mews is off Halsey Street, close to Sloane Square Station (Circle and District Lines) and South Kensington Station (Circle, District and Piccadilly Lines), as well as the shopping facilities of the King's Road.

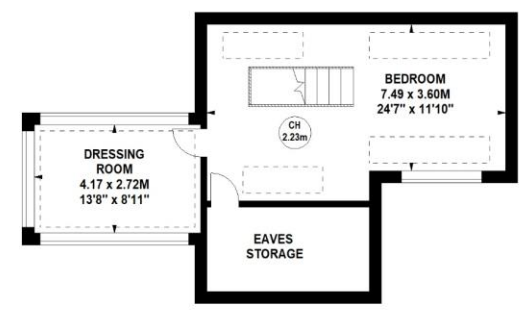
Accommodation

Reception Room | Dining Room | Kitchen | Guest WC | Utility Room | Five Bedrooms | Three Bath / Shower Rooms | Terrace | Car Port | Sun Room 2,153 sq ft (200 sq m)

Asking Price	£3,755,000 STC
Tenure	Freehold
Council Tax	RBK&C Band H

Score	Energy rating	Current	Potential
92+	A		
81-91	B		82 B
69-80	C	69 C	
55-68	D		
39-54	E		
21-38	F		
1-20	G		

Halsey Street, SW3
 Approximate Gross Internal Area
 207.07 sq m / 2228 sq ft
 (Including Eaves Storage)
 Eaves Storage
 6.97 sq m / 75 sq ft

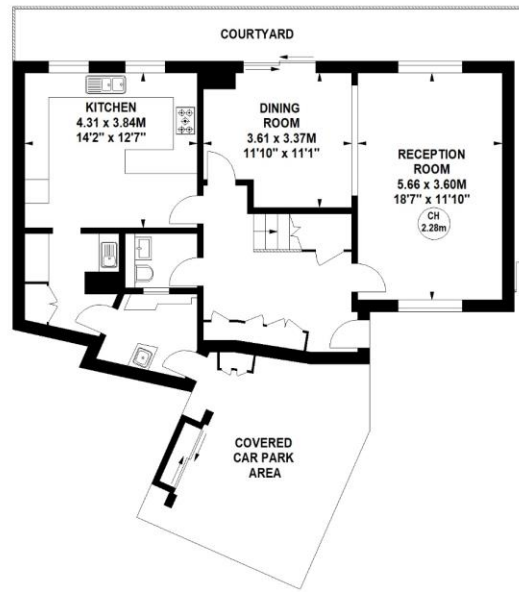


Second Floor

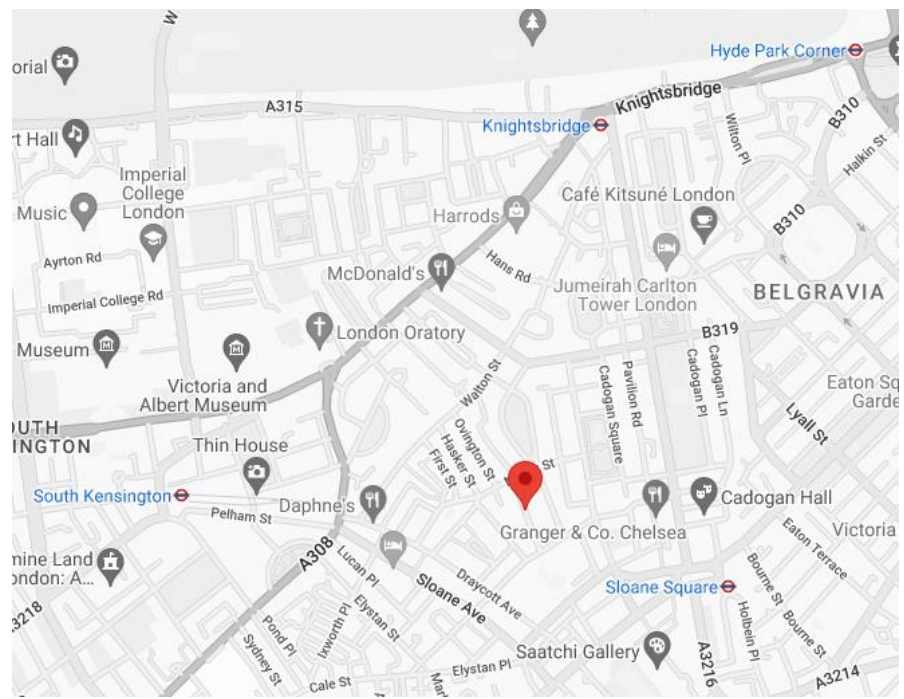


First Floor

Key :
 CH - Ceiling Height



Ground Floor



Please note none of the statements contained in these particulars as to this property are to be relied on as statements or representation of fact. It should also be noted that amenities and appliances have not been tested.

Not to scale, for guidance only and must not be relied upon as a statement of fact. All measurements and areas are approximate only



LCP House, Ogle Street, London W1W 6HU
sales@lcpprivate.com
020 7723 1733





LCP House, Ogle Street, London W1W 6HU
sales@lcpprivate.com
020 7723 1733

LCP/PrivateOffice

est.1990

LCP House, Ogle Street, London W1W 6HU
sales@lcprivate.com
020 7723 1733