

LCP/PrivateOffice

est.1990

Raeburn House, Gloucester Street SW1V
Asking Price £625,000 STC



Description

A well laid out one bedroom apartment with parking on the raised ground floor of a purpose built, period style building in the Pimlico Grid.

The property comprises an open plan kitchen / reception room which leads on to a communal terrace, double bedroom, bathroom and a designated underground parking space. The building further benefits from a porter.

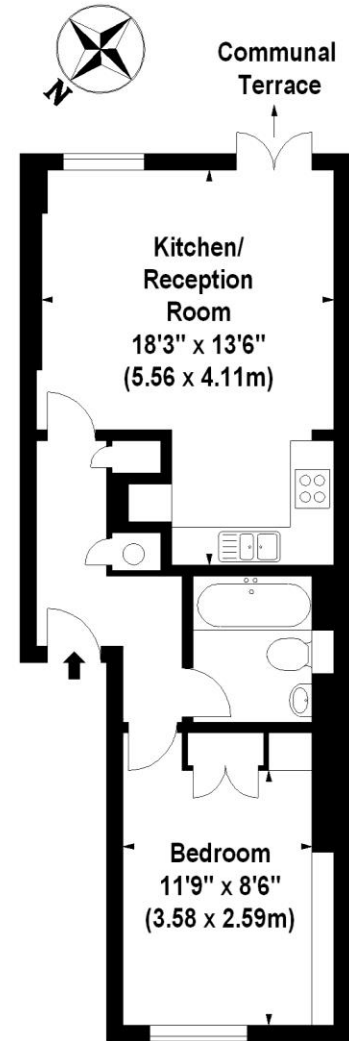
This section of Gloucester Street runs between St George's Drive and Belgrave Road, close to local shopping at Tachbrook Street Market, and excellent transport links at Victoria Station. The nearest green spaces are either St George's Square or Battersea Park's 200 acres are a little further across the river.

Accommodation

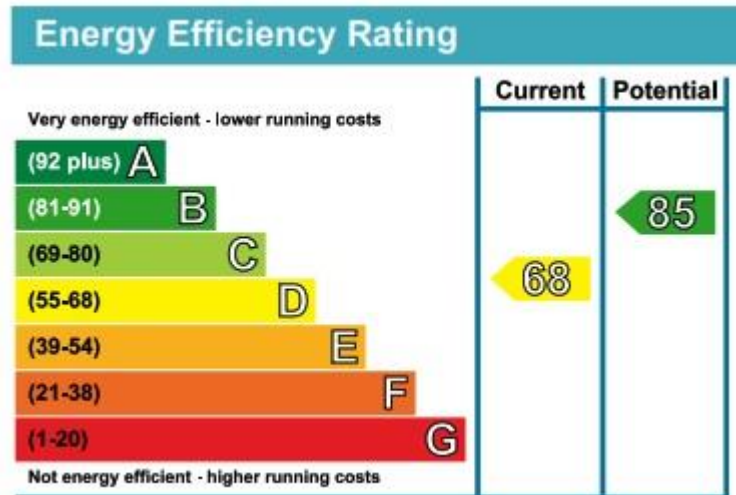
Raised Ground Floor | Open Plan Kitchen / Reception Room | Communal Terrace | Double Bedroom | Bathroom | Parking | Porter | 470 sq ft (44 sq m)

Asking Price	£625,000 STC
Lease	Share of Freehold
Service Charge	£2,938 per annum (inc. reserves)
Ground Rent	Peppercorn
Council Tax	Westminster Band F

**Raeburn House,
Gloucester Street, SW1**
Approx. Gross Internal Area *
470 Sq Ft - 43.66 Sq M



Raised Ground Floor



Please note none of the statements contained in these particulars as to this property are to be relied on as statements or representation of fact.
It should also be noted that amenities and appliances have not been tested.

Illustration For Identification Purposes Only. Not To Scale

*Floorplans Drawn According To RICS Guidelines

Tel : 07976 232758 / 9 www.totalvista.co.uk

© Totalvista 2008 (aa)



LCP House, Ogle Street, London W1W 6HU
sales@lcpprivate.com
020 7723 1733

LCP House, Ogle Street, London W1W 6HU
sales@lcpprivate.com
020 7723 1733

LCP/PrivateOffice

est.1990

LCP House, Ogle Street, London W1W 6HU
sales@lcpprivate.com
020 7723 1733