

LCP/PrivateOffice

est.1990

Westbourne Terrace, Paddington W2
Asking Price £650,000 STC



Description

A well laid out, second and third floor duplex with a private, south-west facing roof terrace.

Entered on the third floor the accommodation comprises a double bedroom with fitted wardrobes, bathroom, stairs down to the open plan kitchen / reception room and French doors on to the roof terrace. The property is towards the rear of the building and overlooks Gloucester Mews.

Westbourne Terrace is close to Paddington Station which benefits from the Heathrow Express, Elizabeth Line, National Rail, Bakerloo, Hammersmith & City and Circle and District Lines. Alternatively the Central Line can be access from Lancaster Gate. The green open spaces of Hyde Park and Kensington Gardens are only moments away.



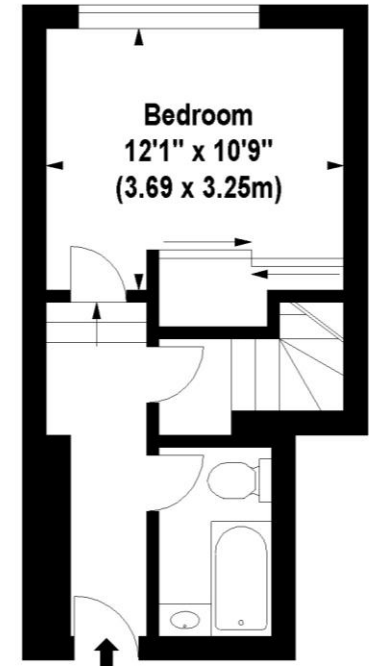
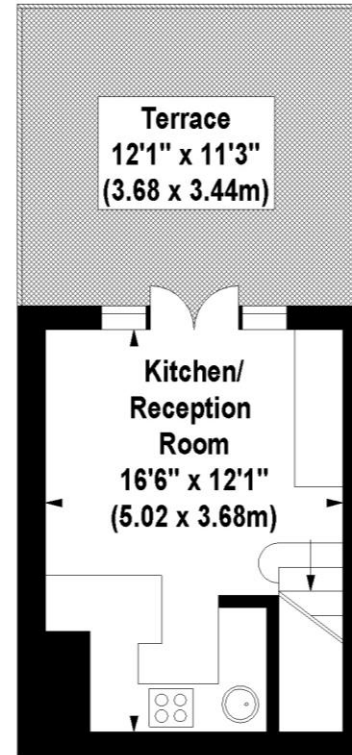
Accommodation

2nd & 3rd Floor Duplex | Open Plan Kitchen / Reception Room | Roof Terrace | Double Bedroom | Bathroom | 457 sq ft (42 sq m)

Asking Price	£650,000 STC
Lease	Share of Freehold
Service Charge	£2,420 per annum (inc. reserves)
Ground Rent	Peppercorn
Council Tax	Westminster Band D

Westbourne Terrace, W2

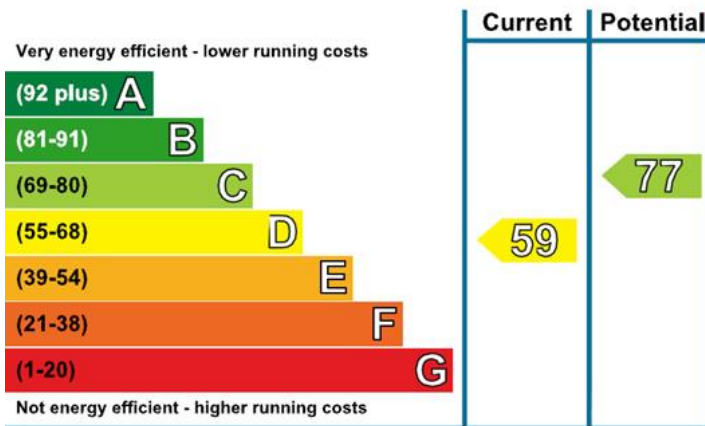
Approx. Gross Internal Area *
457 Sq Ft - 42.46 Sq M



Second Floor

Third Floor

Energy Efficiency Rating



Please note none of the statements contained in these particulars as to this property are to be relied on as statements or representation of fact. It should also be noted that amenities and appliances have not been tested.

Illustration For Identification Purposes Only. Not To Scale

*Floorplan Drawn According To RICS Guidelines

© www.totalvista.co.uk 2013 (aa)



LCP House, Ogle Street, London W1W 6HU
sales@lcpprivate.com
020 7723 1733





LCP House, Ogle Street, London W1W 6HU
sales@lcpprivate.com
020 7723 1733

LCP/PrivateOffice

est.1990

LCP House, Ogle Street, London W1W 6HU
sales@lcprivate.com
020 7723 1733