

LCP/PrivateOffice

est.1990

Meriden Court, Chelsea Manor Street SW3
Asking Price £575,000 STC



Description

A contemporary one bedroom apartment on the first floor of a sought after purpose built block between the King's Road and St Luke's Gardens.

The property is presented in good order and comprises a bright open plan kitchen/reception room, a bedroom with fitted wardrobe and ensuite shower room. The building benefits from a lift, porter and communal heating and hot water.

Meriden Court is quietly situated on Chelsea Manor Street, just off the King's Road thus in excellent proximity to world class shopping, bars and restaurants. St Luke's Gardens are to be found at the opposite end of the road and closest stations are South Kensington or Sloane Square.

Accommodation

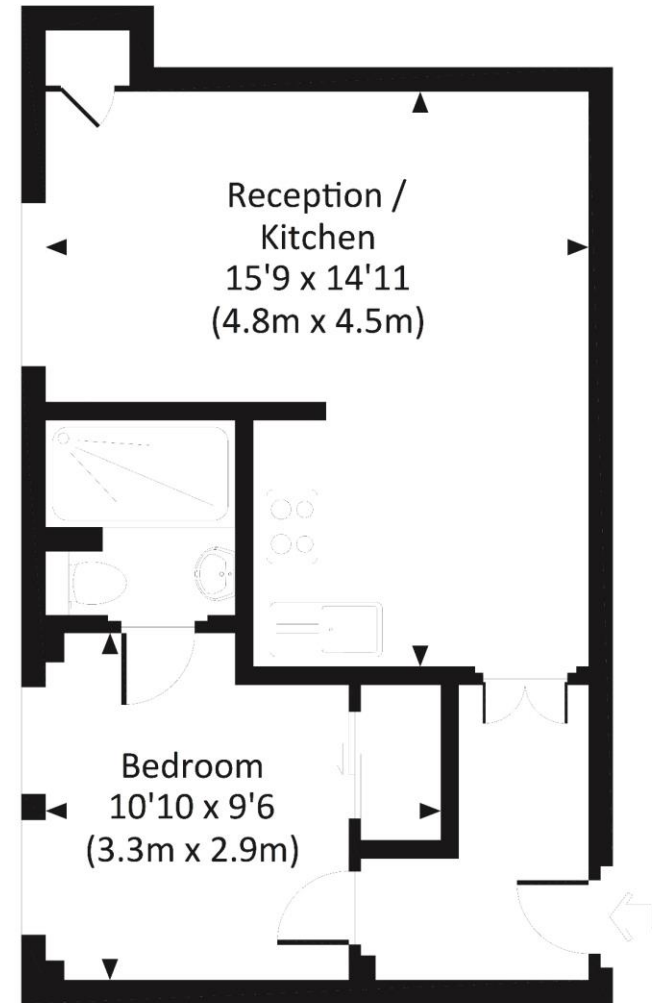
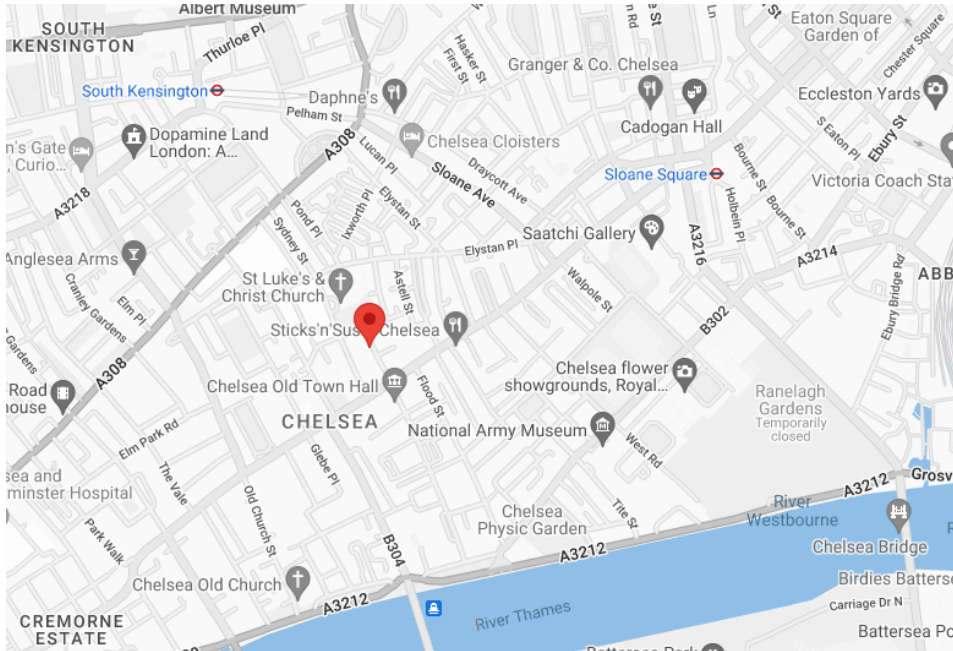
1st Floor Apartment | Lift | Reception Room | Open Plan Kitchen | Master Bedroom | En Suite Shower Room | Communal CH & HW | Porter | Royal Borough of Kensington & Chelsea | 366 sq ft (34 sq m)

Asking Price	£575,00 STC
Lease	Share of Freehold
Service Charge	£5,948 per annum (inc.reserves)
Ground Rent	Peppercorn
Council Tax	RBK&C Band D

CHELSEA MANOR STREET, SW3

Approx. gross internal area

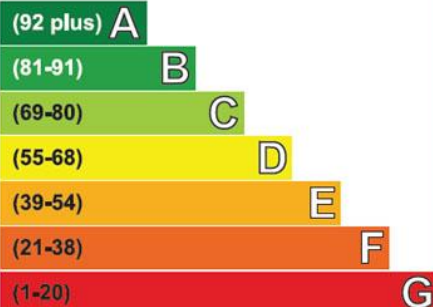
366 Sq.Ft. / 34.0 Sq.M.



FIRST FLOOR

Energy Efficiency Rating

Very energy efficient - lower running costs



Not energy efficient - higher running costs

Current	Potential
73	81



LCP House, Ogle Street, London W1W 6HU
sales@lcpprivate.com
020 7723 1733





LCP House, Ogle Street, London W1W 6HU
sales@lcpprivate.com
020 7723 1733

LCP/PrivateOffice

est.1990

LCP House, Ogle Street, London W1W 6HU
sales@lcpprivate.com
020 7723 1733