



Wheatlands, Heston, TW5 0SA
Guide Price £620,000

DBK
ESTATE AGENTS



Wheatlands, Heston, TW5 0SA

Guide Price £620,000

This impressive detached property spans approximately 1,673 sq. ft and offers spacious and contemporary living.

Featuring five well-appointed bedrooms, this home is perfect for families seeking ample space and comfort. The through lounge provides an expansive and versatile living area. The modern kitchen is equipped with sleek fittings and appliances, catering to all your culinary needs. The fashionable family bathroom suite and an additional ground floor shower room add to the convenience and luxury of this home.

Outside, the property boasts a rear garden with rear access, perfect for outdoor activities and relaxation. The front garden includes off-street parking for 3/4 vehicles, ensuring ample parking space for residents and guests. Additionally, the property includes large storage with external and internal access.

Located in the popular and well maintained area known as Wheatlands, this no through residential road offers straight access into Osterley Park and is within walking distance to local bus routes, ample local amenities and reputable school including Westbrook Primary and Heston School. Osterley Underground Station and Southall Overground Station provide direct links into The City. For motorists the A4/ M4 can be found within close proximity.

Key Features

- **Detached Property**
- **Circa 1,673 Sq. Ft**
 - **Five Bedrooms**
 - **Through Lounge**
 - **Modern Kitchen**
- **Fashionable Family Bathroom Suite + Ground Floor Shower Room**
- **Large Storage with External + Internal Access**
 - **Rear Garden with Rear Access**
- **Front Garden with Off Street Parking for 3/4 Vehicles**
- **Leafy + Picturesque Residential Road**



Lease

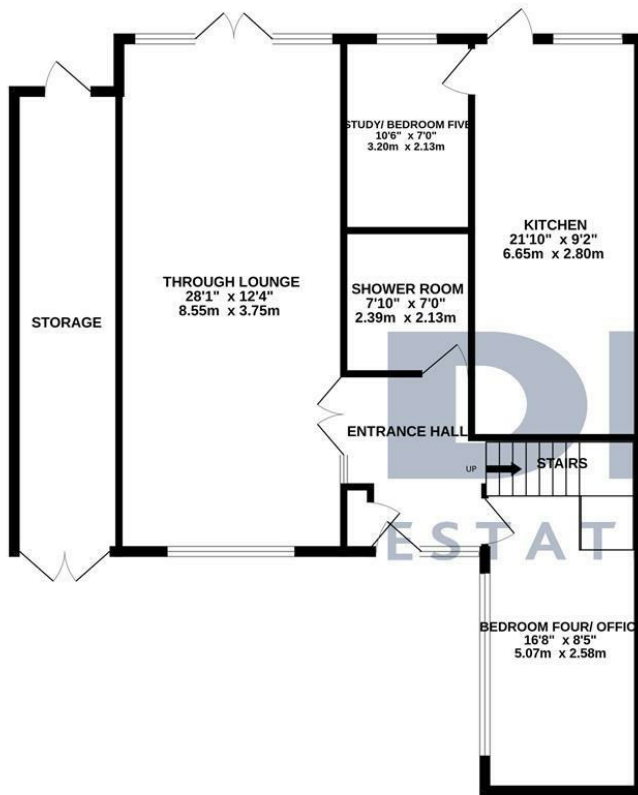
Approx. 940 years remaining

Service Charge

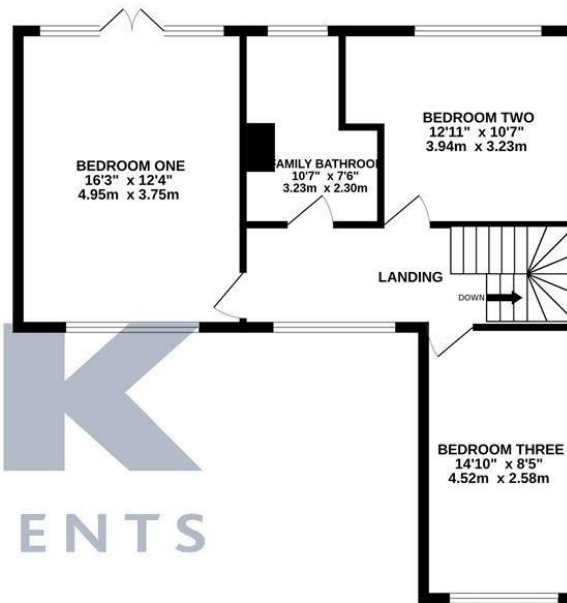
£474.63 per annum



GROUND FLOOR
1055 sq.ft. (98.0 sq.m.) approx.



1ST FLOOR
619 sq.ft. (57.5 sq.m.) approx.



TOTAL FLOOR AREA: 1673 sq.ft. (155.5 sq.m.) approx.

Whilst every attempt has been made to ensure the accuracy of the floorplan contained here, measurements of doors, windows, rooms and any other items are approximate and no responsibility is taken for any error, omission or mis-statement. This plan is for illustrative purposes only and should be used as such by any prospective purchaser. The services, systems and appliances shown have not been tested and no guarantee as to their operability or efficiency can be given.
Made with Metropix ©2024

