

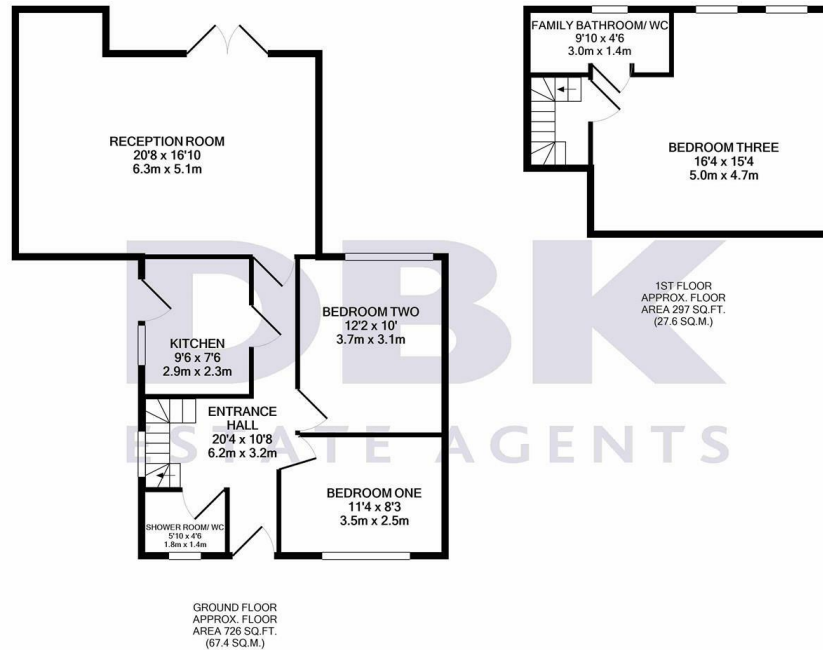


TO LET

Blackberry Farm Close, Hounslow, TW5 9EH
£2,300 Per Calendar Month

DBK
ESTATE AGENTS

- Available To Rent Immediately!
- Semi-detached Bungalow
- Modern Fitted Kitchen with Integrated Appliances
- Shower Room/ WC
- Hounslow West Underground Station 0.6 miles
- Modern Interior Throughout
- Three Double Bedrooms
- Large Reception Room
- Rear Garden + Off Street Parking
- Springwell Junior School 0.2 miles



TOTAL APPROX. FLOOR AREA 1023 SQ.FT. (95.1 SQ.M.)

Whilst every attempt has been made to ensure the accuracy of the floor plan contained here, measurements of doors, windows, rooms and any other items are approximate and no responsibility is taken for any error, omission, or mis-statement. This plan is for illustrative purposes only and should be used as such by any prospective purchaser. The services, systems and appliances shown have not been tested and no guarantee as to their operability or efficiency can be given

Made with Metropix ©2021

THE PROPERTY

Available To Rent Immediately!

Newly Refurbished Semi-detached Bungalow! Accommodation comprises three sizeable double bedrooms, a brand new modern fitted kitchen with integrated appliances, a large through lounge and a chic shower room/ wc. Supplementary to this is an ensuite, large rear garden, off-street parking for 2-3 cars, double glazed windows and gas central heating.

This property is sited moments away from excellent nearby transport links such as Hounslow West Underground Station connecting commuters to The City as well as local bus links providing transport to neighbouring towns and Heathrow Airport. Furthermore, it is conveniently located to an array of local amenities. For motorists the A4/M4 can be found within proximity. Reputable schools such as Heston Community School, Berkeley Academy and Westbrook Primary can be found nearby.