



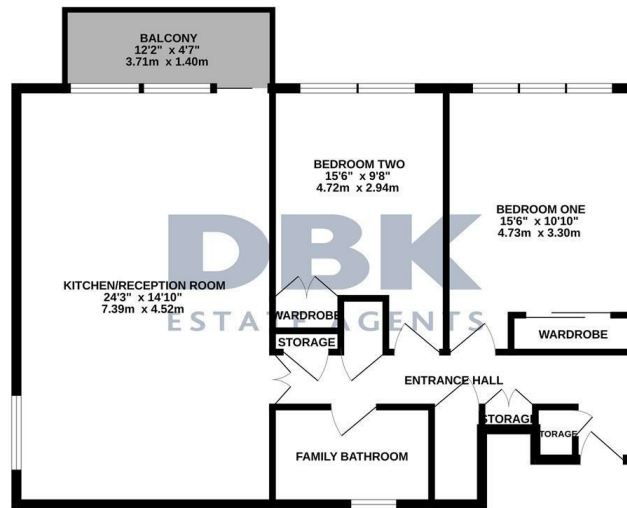
TO LET

Wheatlands, Hounslow, TW5 0SJ
£1,950 Per Calendar Month

DBK
ESTATE AGENTS

- Available To Rent Immediately!
- First Floor Apartment
- Two Sizeable Bedrooms
- Modern Large Open Plan Kitchen/ Reception Room
- Chic Family Bathroom
- Private Balcony
- Lift Servicing All Floor
- Secure Entry System
- Fitted Wardrobes
- Osterley Underground Station 0.8 miles

855 sq.ft. (79.4 sq.m.) approx.



TOTAL FLOOR AREA: 855 sq.ft. (79.4 sq.m.) approx.
Whilst every attempt has been made to ensure the accuracy of the description contained herein, measurements of such, windows, doors and any other items are approximate and no responsibility is taken for any error, omission or misstatement. This plan is for illustrative purposes only and should be used as a guide by any prospective purchaser. The services, systems and appliances shown have not been tested and no guarantee is given as to their operability or efficiency can be given.
 Made with Metropac ©2024

THE PROPERTY

Welcome to this stunning modern apartment located in the desirable area of Westbourne, Wheatlands, Hounslow. This property boasts a spacious circa 900 sq ft of living space, perfect for those looking for a comfortable and stylish home.

Upon entering, you are greeted by a large open plan kitchen and reception room, ideal for entertaining guests or simply relaxing after a long day. The chic family bathroom/WC adds a touch of elegance to the property, providing a tranquil space to unwind.

With two sizeable bedrooms, there is plenty of room for a growing family, guests, or even a home office. The apartment is perfect for those seeking a contemporary living space with a touch of sophistication. Supplementary to this is the luxury of having a private balcony to allow some outdoor space.

Located in a vibrant neighbourhood, this property is available to rent immediately, offering convenience and comfort to its future residents. Don't miss out on the opportunity to make this modern apartment your new home in Westbourne.